



Introduction to GSAK V8.2 (Geocaching Swiss Army Knife)

Geocaching.com Access

By Allyn Vaughn

GSAK Geocaching.com Access

The upgrade to Version 8 was well worth the small cost but with Geocaching.com Access it makes it an even better deal.

Geocaching.com Access provides powerful features such as:

- ❑ Refreshing Cache Data
- ❑ Publishing Logs
- ❑ Getting Pocket Queries
- ❑ Getting Recent Logs
- ❑ Getting Geocaches
- ❑ Many more!



GSAK Geocaching.com Access

Geocaching.com Access is located on the top menu bar just to the left of Help.

The pull down menu offers lots of features that makes it well worth the investment.

It will save you lots of time logging caches, getting caches and keeping existing caches in your databases up to date.

It uses API features to grab information from GC.com. You have a daily limit of 6000 API's with one cache equal to one API. Shouldn't be a big issues for this part of the feature.



Getting Caches

Select the Get Geocaches tab from the pull down menu and the Get Geocaches dialog box will appear.

Choose your location and how you want to search (circle, rectangle, or from a GC Code) and how far to search for as well as the number of Geocaches to get.

For rectangle or circle click Google Maps to locate the search/retrieve area which will return the location.

Choose the types of caches to get, the difficulty and terrain.

Make sure your current database is where you want to save the data.



Getting Caches

Search Type

Amount of caches to get

Type of caches to search for
Size
Type
Difficulty
Terrain

Get Geocaches

Basic | Advanced

Reference

Center point: Centre point = Temp. 36.18038 +115.32195

Max Distance: 20 Miles

Max geocaches: 100 Logs per cache: 10 (Max 30 allowed)

Include: Found by me, Disabled

Container size: Large, Regular, Small, Micro, Other, Virtual, Not chosen

Cache types: Traditional, Multi, Letterbox, CITO, Event, Locationless, Virtual, Web Cam, Mystery, Earth, Project APE, Mega Event, Maze Exhibit, Wherigo, L&F Event, Groundspeak HQ, L&F Celebration, Block Party

Difficulty between: 1.0 -- 5.0

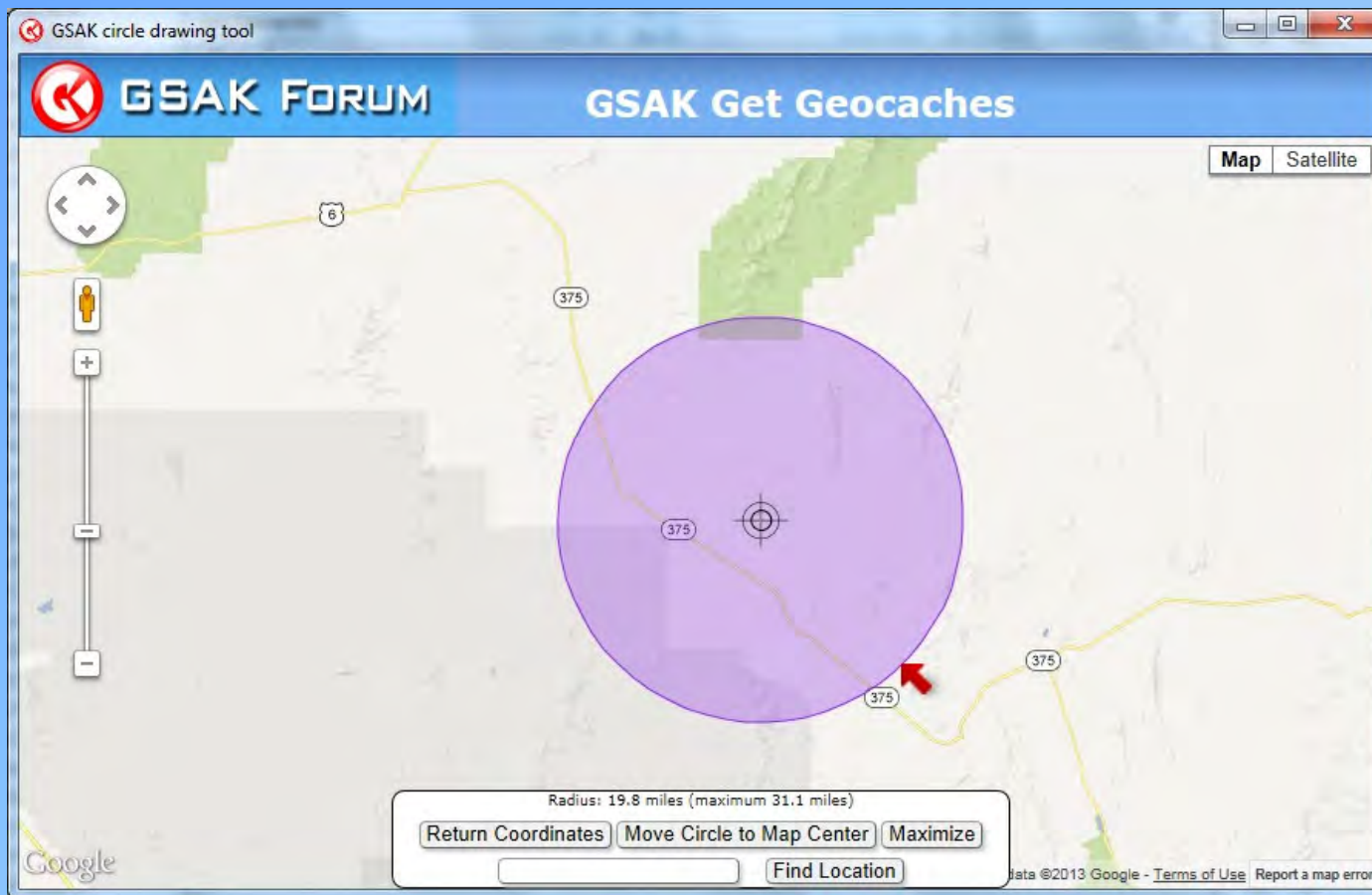
Terrain between: 1.0 -- 5.0

Settings: ... Last active

Save, Delete, OK, Balances, Cancel, Help



Get Geocaches - Circle



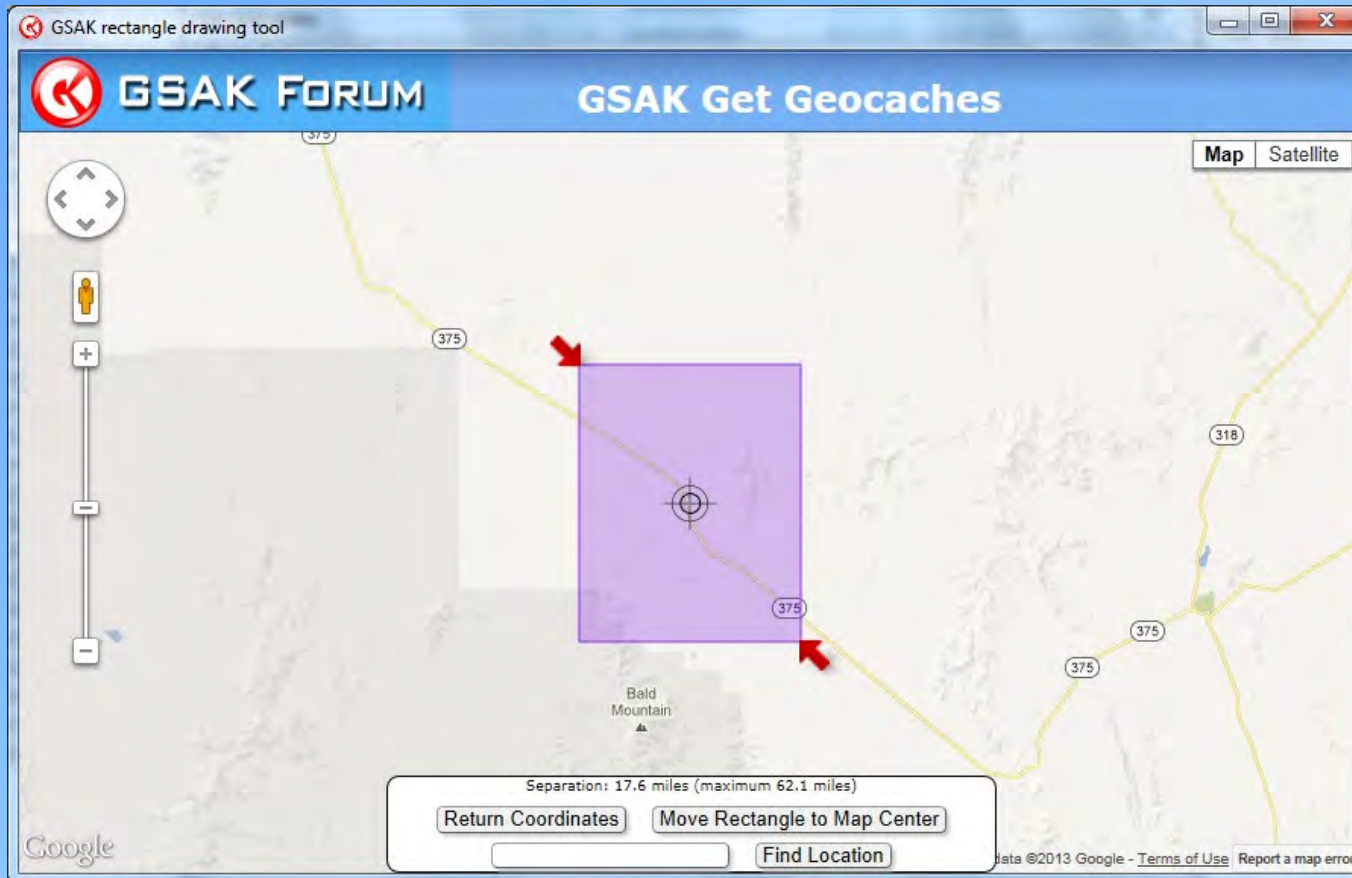
Click Google Maps to show this screen

Center circle on location to search for caches

Click Return Coordinates to return to the previous screen



Get Geocaches – Rectangle



Same as the circle feature but you can use a square or rectangular shape to search



Get Geocaches

Remember to set the current database to the one you want to load the caches into or you will have some clean up to do!

The retrieve feature will use some of your daily API limit depending on how many caches you retrieve. You get 6000 API credits each day with each cache a single API.



Refresh Cache Data

I use this feature a lot. Before Version 8 if I wanted to update the data on caches in my database, I had to download the GPX file again. Now you only need to refresh the data for the GPX files in your database.

This allows you to keep you databases up to date without deleting and re-installing cache files.

Really helpful to keep you from searching for a cache that recently got disabled or archived!



Refresh Cache Data

In the current database you want to update, click on the Refresh Cache Data tab on the pull down menu.

Click on either current cache or all caches in the popup dialog box.

Fill in how many logs to retrieve (30 is the maximum you can get).

Choose Full or Light (I use Full and it doesn't impact my speed).

Click on OK and the caches in your database will be refreshed with new data.

When it is done a status box will appear telling you how many caches were updated.

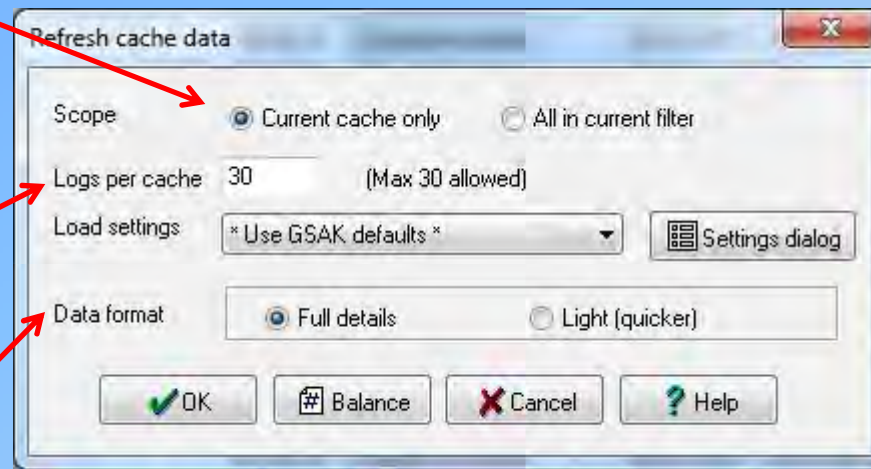


Refresh Cache Data

Current or All
in Filter

Amount of
logs to
retrieve

Data
format



Refresh cache data

Scope Current cache only All in current filter

Logs per cache: 30 (Max 30 allowed)

Load settings: * Use GSAK defaults * Settings dialog

Data format: Full details Light (quicker)

OK Balance Cancel Help



Publishing Logs

By far the biggest time saver I have ever seen! This right here was worth the cost of the upgrade all by itself. If you have big days and are tired of manually logging all of the logs in or tired of publishing each on through GC.com, this is THE feature for you!

Allows you to either load logs from a file (like geocache visits.txt on your Garmin), straight from your GPSr or from GSAK itself. I use the Garmin file for my logs and will explain that approach. The others are similar just a different location to grab the data from.



Publishing Logs

From the pull down menu click on the Publish Logs tab and a dialog box will appear. Here is where you can automate your logs for those big days.

Click on Templates and then on the pull down menu select Found It.

Type in the typical log test you want to appear on all logs. Don't worry you can add cache specific features later. You can also leave this blank if you want to edit all but the larger the count the bigger the job.



Publishing Logs

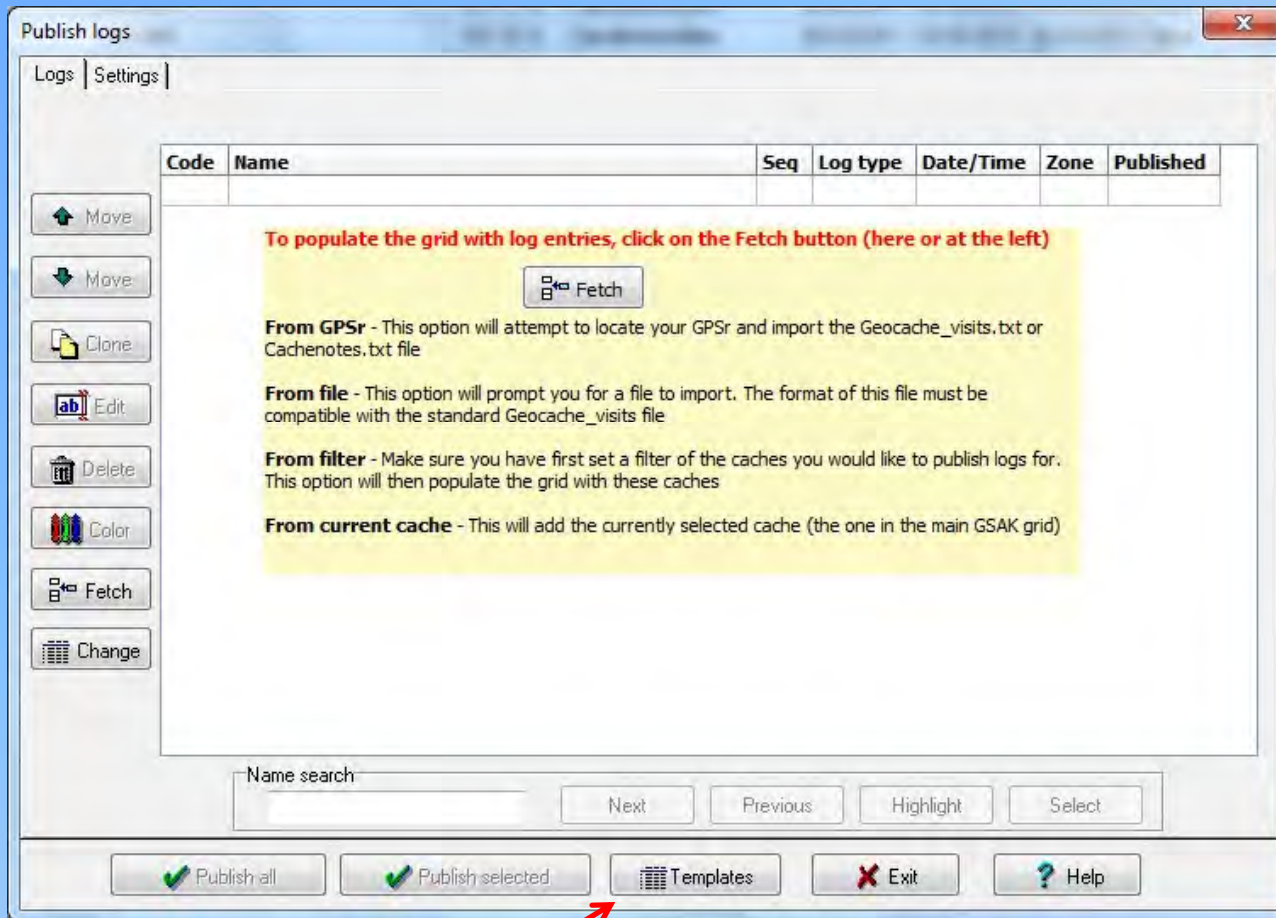
The template page has powerful features that allow you to select tags at the cursor. In my example I save a spot for field notes, which is where I can add cache specific text.

It also allows you to keep count of the finds that day, what cache number this is, your total finds, the time the date and others. Go ahead and explore.

After you type your typical cache log text, hit the Check box and it will spell check you template text. Very useful to keep you from have misspelled logs on hundreds of caches!



Publishing Logs



Templates



Templates

Type of
template

Tag

Text to be
logged for
all caches
in file

Publish Templates

Found it

Template

Tags

+ Select a tag to insert at cursor +

%FieldNotes

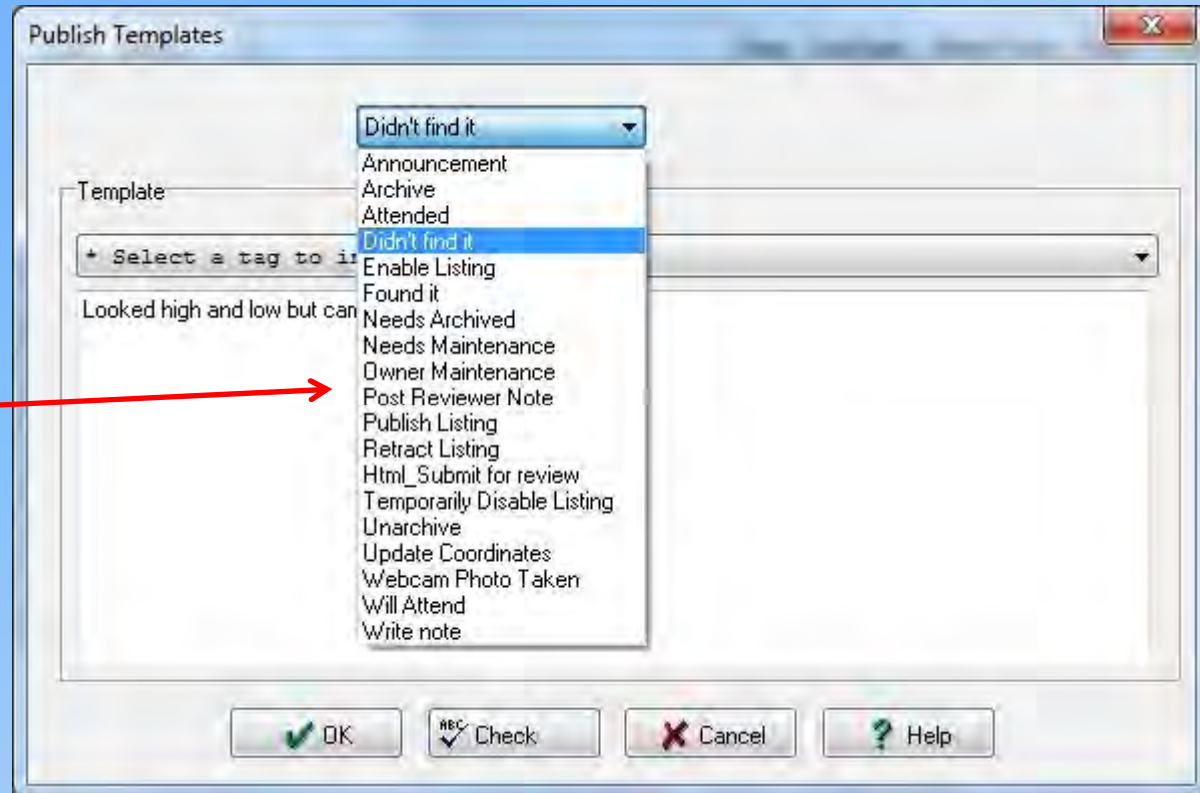
Went out this early morning to claim a FTF on one of these ;puzzles and to pick up the smiley on the rest. I really enjoyed the puzzles. Not too hard but not too easy. I also like having another puzzle mind to explore! Thanks for putting these out and keep them coming!

OK Check Cancel Help



Templates

You can create a template for each of the types of logs noted in the drop down list



Tags

Tags are a unique way to add additional information to your logs.

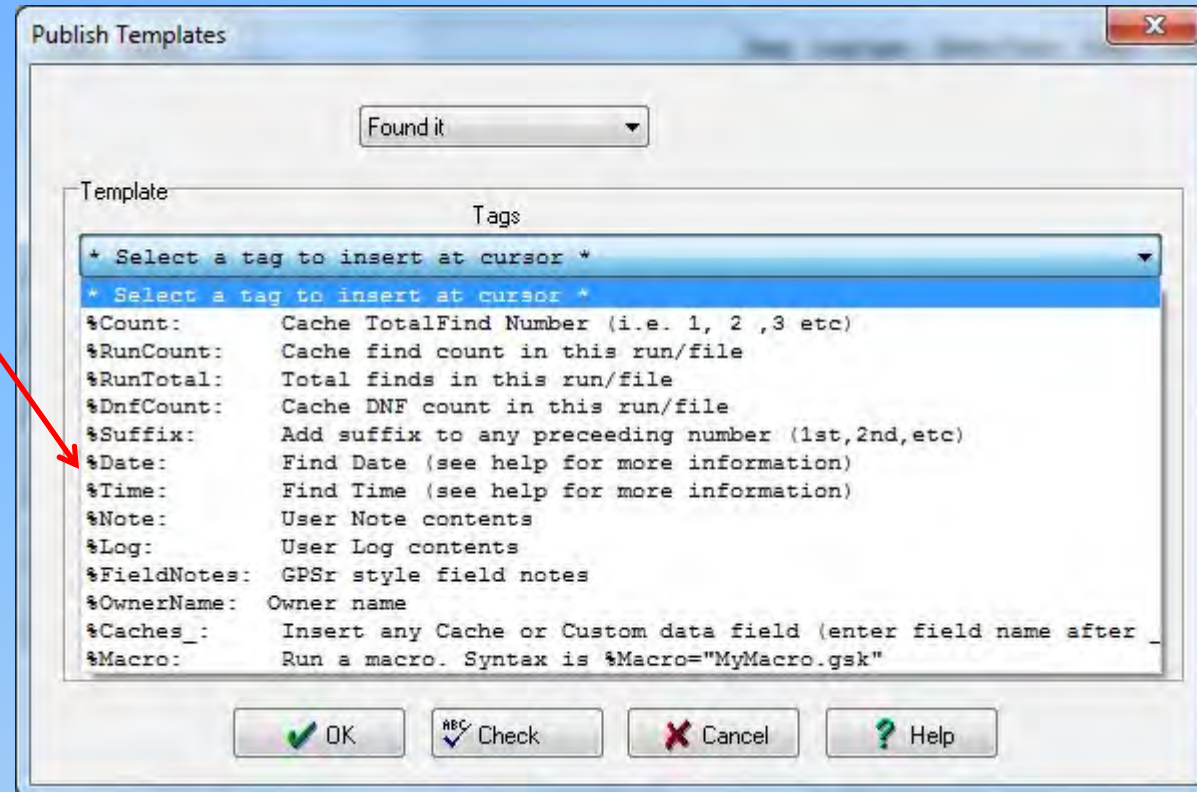
You can add notes specific to the cache (Field Notes), keep track of the number of finds and which number this cache is in the number (Count, RunCount, RunTotal).

You can add the date and time you logged the find or cache.



Tags

Pull down list
of the various
tags you can
add to your
logs



Fetch

There are four ways you can fetch logs to publish:

- ❑ From a GPSr
- ❑ From a file
- ❑ From a filter within GSAK
- ❑ From the current cache in GSAK

I will walk you through the file option as that is what I am familiar with. The file option uses a text file generated by my Garmin GPSr when I am caching in the field. Each time I log a find in my GPSr it adds the cache ID, time, and any notes to a text file I later grab from my GPSr to publish.



Fetch

From the main Publish Logs menu click on the Fetch button in the middle of the screen.

A pull down menu will appear giving you the options I just described.

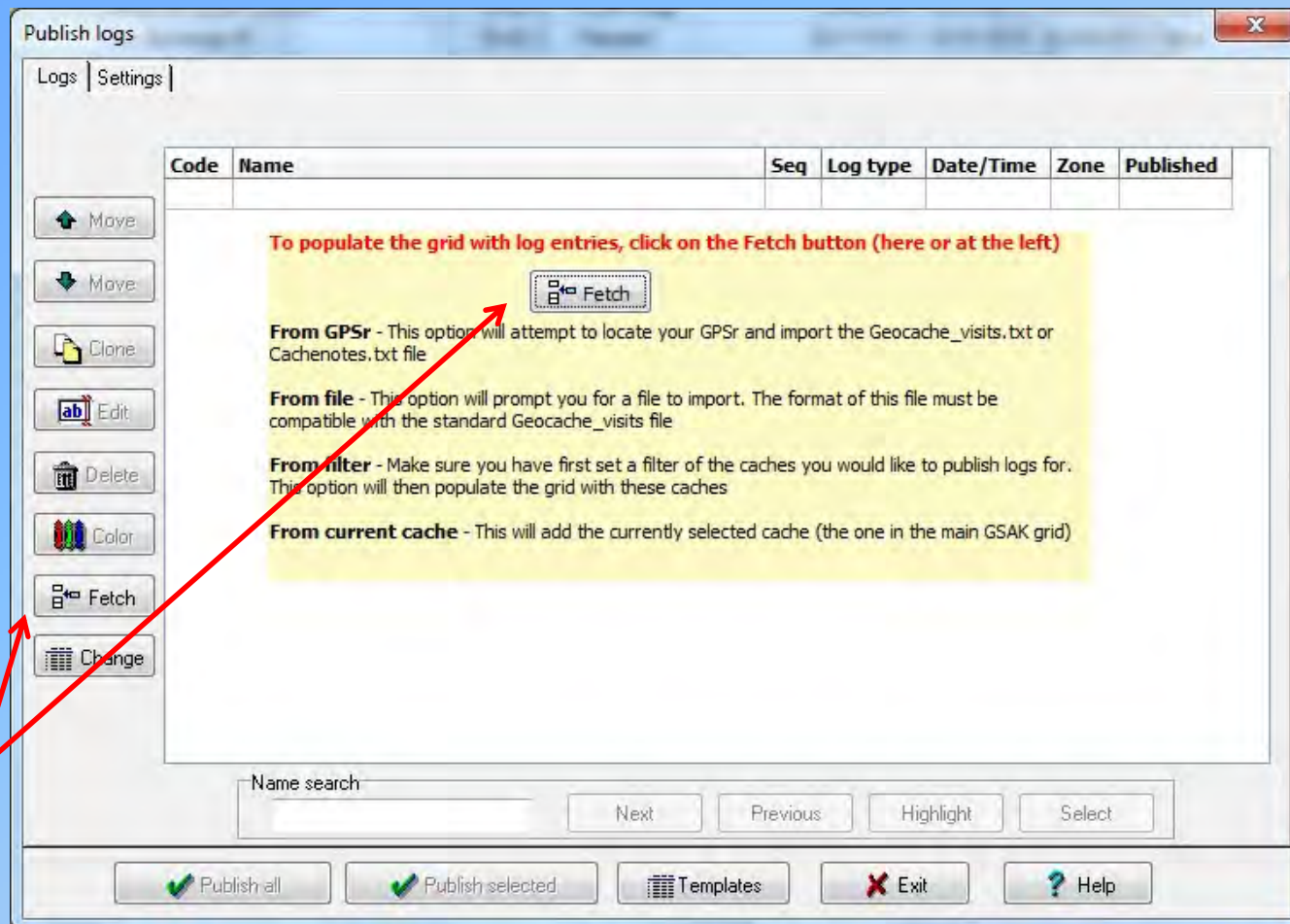
Click on the From File option.

A pull down menu will appear asking you where the file is located on your computer. Find the file on your computer and click okay. If you have already logged these caches, GSAK will let you know and ask if you want to continue anyway.

Once you load the file and dialog box will appear.



Fetch



Click on the Fetch button to fetch your log file



Fetch

Publish logs

Logs | Settings

😊 7

Code	Name	Seq	Log type	Date/Time	Zone	Published
GC43XRG	Penne for your thoughts?	2240	Found it	2013-03-02 07:44:00	-08:00	No
GC46HOR	Pi Not?	2250	Found it	2013-03-02 07:51:00	-08:00	No
GC46CXG	Patience is a Virtue	2260	Found it	2013-03-02 07:57:00	-08:00	No
GC43XQJ	The Projection Project	2270	Found it	2013-03-02 08:02:00	-08:00	No
GC46BCW	12 Month Challenge	2280	Found it	2013-03-02 08:09:00	-08:00	No
GC46BBP	Picture Perfect	2290	Found it	2013-03-02 08:17:00	-08:00	No
GC46BC6	Word-Set-Match	2300	Found it	2013-03-02 08:24:00	-08:00	No

Move (up)

Move (down)

Clone

Edit

Delete

Color

Fetch

Change

Name search

Next Previous Highlight Select

Publish all Publish selected Templates Exit Help

Click this button to edit the log you have highlighted



Editing Logs

When you are done fetching the logs the list of caches you want to publish will appear in a dialog box where you can add notes, edit the caches, add favorite points, add trackables and add pictures.

To edit a log highlight that cache and then click on the edit button. A dialog box will appear with the cache information you can edit.

From there you can add field notes, select the cache as a favorite, add smileys, log a trackable or add a picture.



Editing Logs

Add a favorite

Add notes specific to this cache

Log a trackable or add a picture to the log

OK **Prev** **Next** **Templates** **Trackables** **Images** **Cancel** **Help**



Logging a Travel Bug or Coin

If you want to drop or have a Travel Bug or Geocoin visit the cache you are about to log, click on the Trackables button at the bottom of the screen.

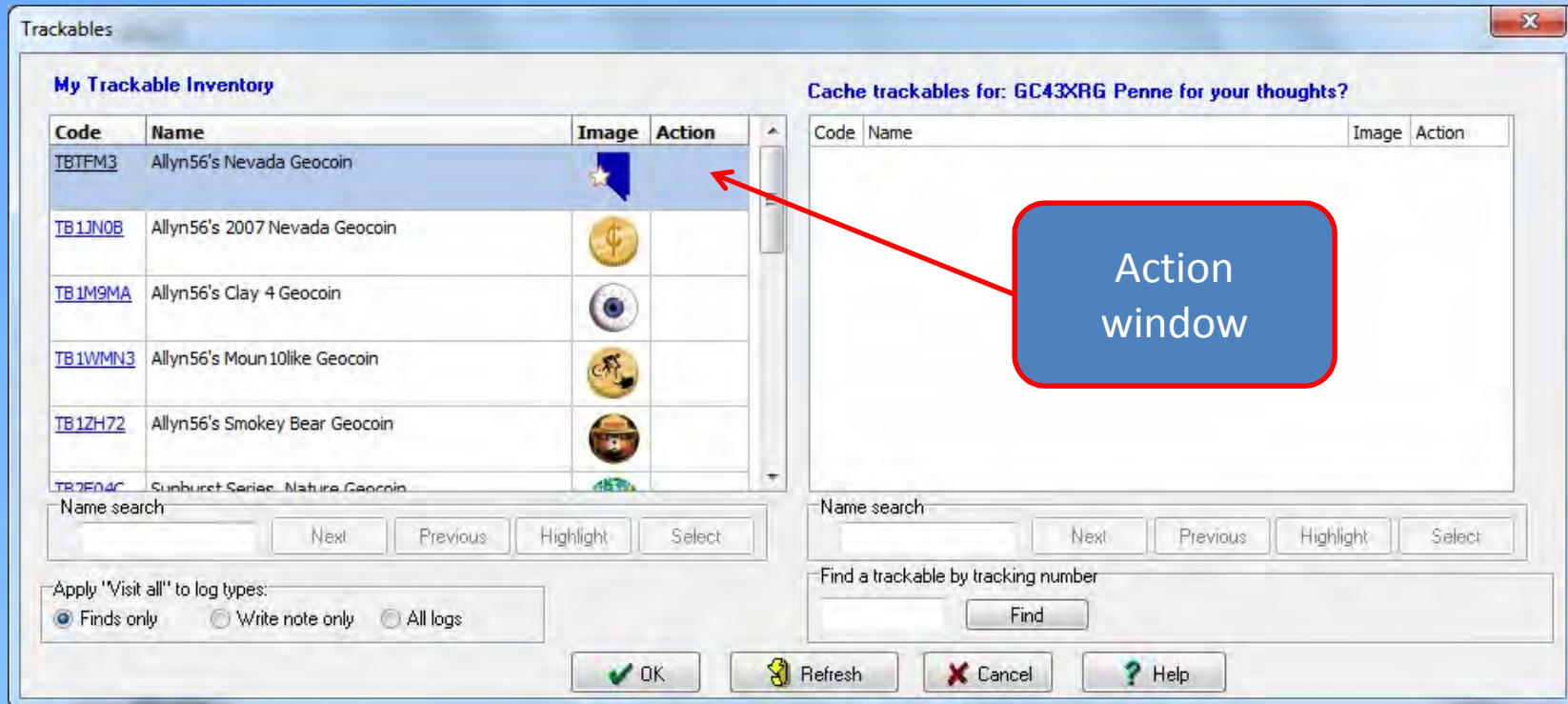
GSAK will fetch your current inventory of trackables and then a screen showing your inventory will appear.

Select the Travel Bug(s) or Coin(s) you want to drop or visit and then right click on the Action window. From there a drop down menu will appear where you can drop, visit or visit all.

Visit All will have this item visit all of the caches you are about to log.



Trackables



The trackables dialog box shows the list of trackables in your current inventory on GC.com



Pictures

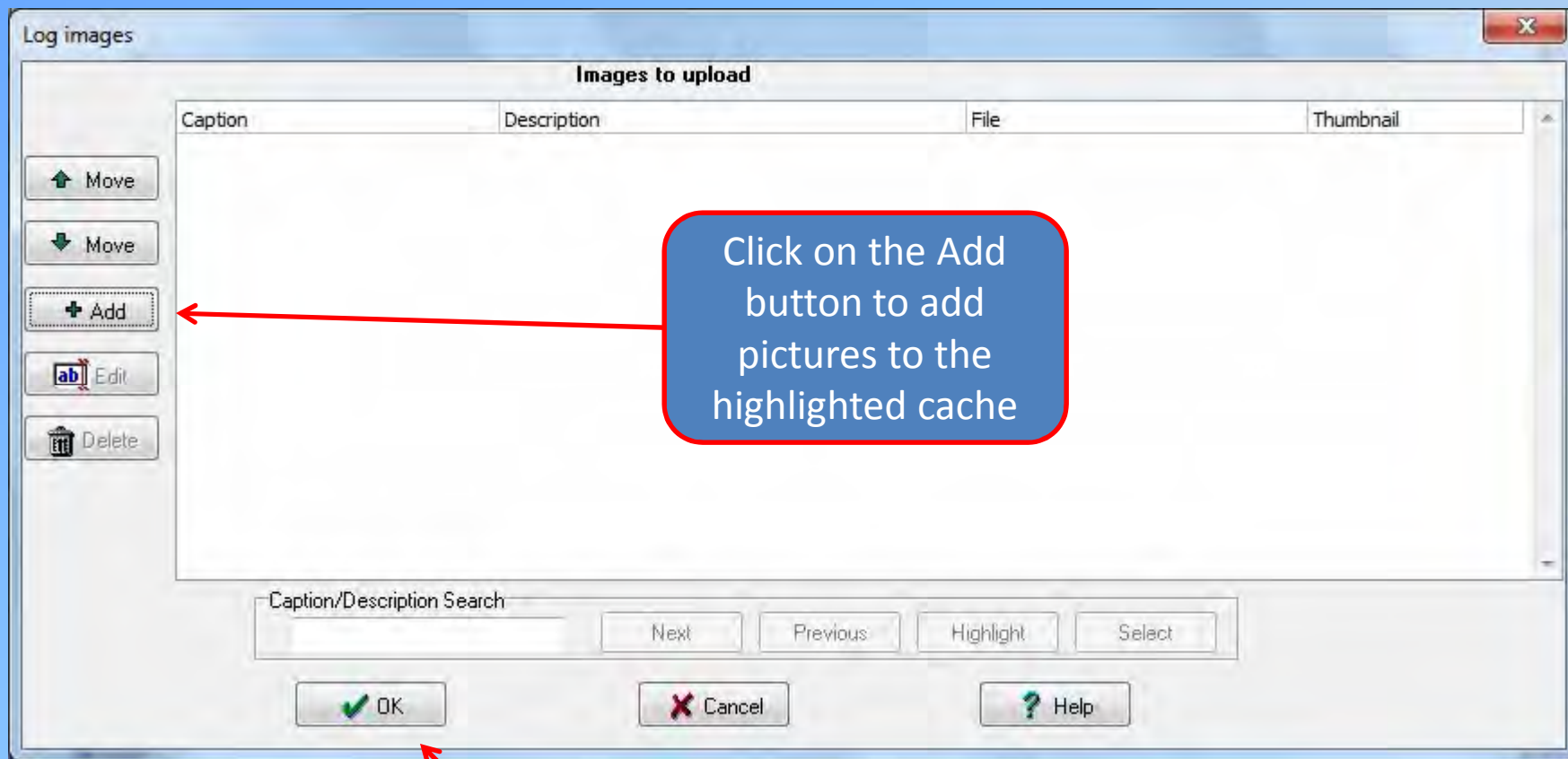
Just like the Trackables option you can add a picture to your log as well from within GSAK.

Click on the Images button at the bottom of the screen and a dialog box will appear where you can manage the images you want to post to the highlighted cache.

Click on the Add button on the left and then another dialog box will appear asking you for the location of the picture file, what caption you want to include with the picture and any description you want to add.



Pictures



When you are done with the picture click OK to add this picture to you post



Pictures

Log images

Image file

Caption 0/50

Description

REC Check

Publish to Geocaching.com Add to user notes

OK Cancel Help

This is the window where you load the picture file, add a caption to the picture and then any description you may want to add to the picture you are about to post



Publishing the Logs

When you are all done with your logs and are ready to publish them, you click on one of the publish buttons at the bottom of the page. You can publish the current cache or you can publish all. I use the publish all when I am ready and then GSAK will automatically publish all of the caches you want to log.

If you have a lot of caches you can walk away from your computer, enjoy the company of your fellow cachers while posting your logs rather than sit behind your screen manually logging all of your caches one at a time.

Now wasn't that worth the \$30 Clyde asks for this great program?!!



Publishing Logs

The screenshot shows the 'Publish logs' application window. The window title is 'Publish logs'. It has a menu bar with 'Logs' and 'Settings'. Below the menu bar is a toolbar with icons for Move (up and down arrows), Clone, Edit, Delete, Color, Fetch, and Change. The main area contains a table with the following data:

Code	Name	Seq	Log type	Date/Time	Zone	Published
GC43XRG	Penne for your thoughts?	2240	Found it	2013-03-02 07:44:00	-08:00	No
GC46HOR	Pi Not?	2250	Found it	2013-03-02 07:51:00	-08:00	No
GC46CXG	Patience is a Virtue	2260	Found it	2013-03-02 07:57:00	-08:00	No
GC43XQJ	The Projection Project	2270	Found it	2013-03-02 08:02:00	-08:00	No
GC46BCW	12 Month Challenge	2280	Found it	2013-03-02 08:09:00	-08:00	No
GC46BBP	Picture Perfect	2290	Found it	2013-03-02 08:17:00	-08:00	No
GC46BC6	Word-Set-Match	2300	Found it	2013-03-02 08:24:00	-08:00	No

Below the table is a 'Name search' field and buttons for 'Next', 'Previous', 'Highlight', and 'Select'. At the bottom of the window are buttons for 'Publish all', 'Publish selected', 'Templates', 'Exit', and 'Help'. A blue callout box with a red border contains the text: 'When you are ready click on Publish All or Publish Selected'. Two red arrows point from this callout box to the 'Publish all' and 'Publish selected' buttons.



Other Features

Geocaching.com Access will also allow you to do other things as well. Although I don't use them much you can:

- ❑ Retrieve active pocket queries you have on GC.com.
- ❑ Get recent logs for the caches in your database (Similar to the Refresh Cache data feature).
- ❑ Manage your Favorite points.
- ❑ Add caches to a bookmark list.



GSAK Features

There are many powerful features within this program. I hope some of the ones I just reviewed will let you explore this program even more.

Enjoy the program and enjoy your days of Geocaching!

I hope you learned a bit more about GSAK. For more information go to the GSAK site and look around.

