



Introduction to GSAK V8.2 (Geocaching Swiss Army Knife)

Views and Filters

By Allyn56

Views and Filters

GSAK has many features that allow you to get more out of your Geocaching experience. Some of the more powerful features of the basic program is the ability to sort information in your databases and find information through search filters.

Your database can be setup to show consistent views that you like, using columns and split screens.

You can also search for specific data relative to search fields called filters. I just had to use these to find out if I met various challenge caches placed around town recently.



Views

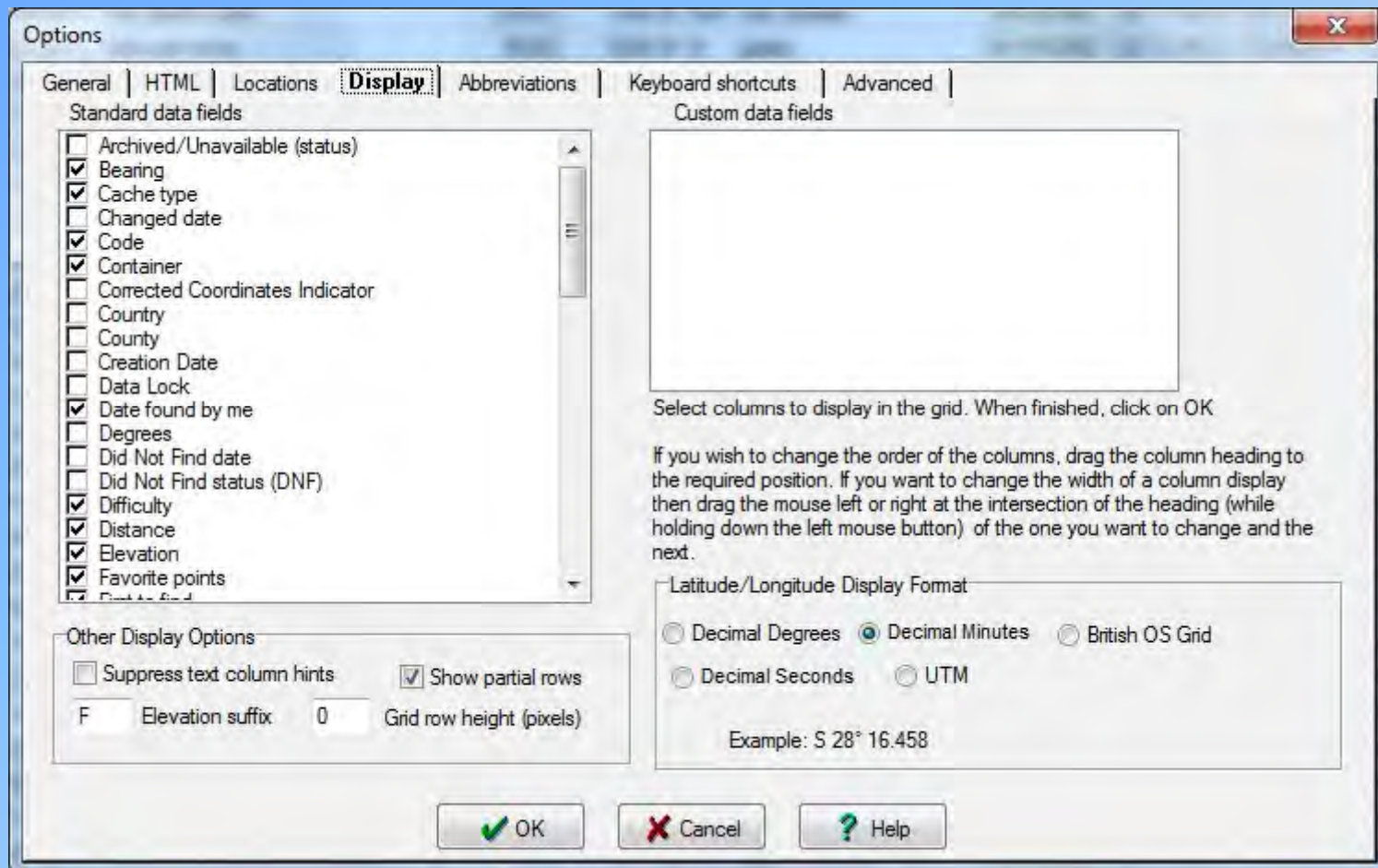
Every database has a default view. You can modify that view to show only the information you want. These are typically done through the columns that show specific information.

Columns can be added or removed through the View tab menu at the top of the page. Click on View and a pull down menu will appear that has the Add/Remove Columns field down near the bottom. You can also get here through the Options menu.

Click on the Add/Remove Columns option to get a dialog box that shows the various columns you can choose from. A check mark in the box means it will be displayed in your view.



Columns



Columns

Derived from GPX

Archived/Unavailable (Status)
Cache Type
Code
Container
Country
Difficulty
Favorite Points *
GC.com Note *
Guid *
Hints
Latitude
Longitude
Owner ID
Owner Name
Placed By
Placed Date
Premium *
Source
State
Terrain
Travel Bugs
URL
Waypoint Name

Managed by GSAK

Bearing
Changed Date
County
Creation Date
Date Found By Me
Degrees
Did Not Find Date
Did Not Find Status (DNF)
Distance
Elevation
Found Count
Found Status
Last Found
Last Four Logs
Last GPX Update
Last Log Date
Last User Update
Macro Sort
Number of Logs
Resolution
Row Number
Smart Name

Managed by User

Corrected Coordinates
Indicator
Data Lock
Notes
User Data
User Data 2
User Data 3
User Data 4
User Flag
User Sort
Watch Status

*Additional user-defined
Custom Data fields are also
supported.*

* currently only
populated by API



Columns Sort

You can sort by columns once you have your database view set. To sort by the column you want just click on the top of the column where the label is. It will highlight that column.

You sort by ascending order or descending order. Just click on the label again to change it. You will see a green arrow that points in the direction of the sort.



Column Sort

GSAK 8.2.1.135 Database: Temp - North (Registered to: Allyn Vaughn)

File Search User Flags View Centre Point Waypoint Database GPS Macro Tools Geocaching.com access Help

Lock First Code Search Name Search Split screen format Select a saved filter Database Locations Views

Column Full display None Temp - North ...Not active Default

Code			F _T F	Ig	Last Log	Found by me	Waypoint Name	Miles	Brg	Placed By	Placed	Last GPX	Last Found	Container	Diff	T...	Smart Name
GC3RV...					02/23/2013		Oh NO NOt anOther RÜck!!!!	14.35	NE	ejworth	08/03/2012	03/03/2013	02/23/2013	Not cho...	1.5	1.5	OhNONQA
GC44M...					02/24/2013		ABCDEF	14.52	E	Baaby Caakes	01/19/2013	03/03/2013	02/24/2013	Micro	1.5	2.0	ABCDEF
GC39P22					11/16/2012		A GCrew Christmas...	2.74	N	CoffinChamer	12/26/2011	03/03/2013	11/16/2012	Small	2.0	3.0	GCrewChr
GC46T4G					03/03/2013		Blood From A Stone	12.59	NE	mmbbeer1968	02/28/2013	03/03/2013		Other	2.0	3.0	BloodFro
GC3BE...					03/01/2013		Change For A Para Dime	17.07	E	Baad Daata	01/24/2012	03/03/2013	03/01/2013	Micro	2.0	2.0	ChangeFo
GC42G...					02/26/2013		Cheyenne Sports Complex	12.52	E	USAF MSgt	12/06/2012	03/03/2013	02/26/2013	Micro	2.0	1.5	Cheyenne
GC465X8					03/02/2013		Coin Exchange #1	16.42	E	PreludeX	02/17/2013	03/03/2013	03/02/2013	Micro	1.5	1.5	CoinExc1
GC46A3P					03/02/2013		coin exchange #2	17.43	E	PreludeX	02/20/2013	03/03/2013	03/02/2013	Micro	1.5	1.5	CoinExc2
GC4697H					02/26/2013		Dead Drop	7.00	N	Bob & Brenda - Reno	02/24/2013	03/03/2013		Regular	4.0	2.5	DeadDrop
GC43A...					02/02/2013		Fifth Anniversary Cache	9.51	N	Fathom16	12/26/2012	03/03/2013	02/02/2013	Small	1.5	2.0	FifthAnn
GC44Y5N					03/03/2013		Flatline	10.20	NE	piratemickey & insanecast	01/25/2013	03/03/2013	03/03/2013	Not cho...	2.0	1.0	Flatline
GC46C...					03/02/2013		Get/Set 114 (Flat as a pancake on Elkh...	9.44	NE	bythewind777	02/21/2013	03/03/2013	03/02/2013	Micro	1.5	1.5	GetSe114
GC44TQF					02/26/2013		Parts is Parts #4	5.06	NE	VegasVem	01/22/2013	03/03/2013	02/26/2013	Micro	1.5	1.5	Partsls4
GC45689					02/25/2013		Pinwheels	6.94	E	tyrcanine	01/30/2013	03/03/2013	02/25/2013	Micro	3.0	1.5	Pinwheel
GC3PH...					03/01/2013		Remembering Dan Weldon	18.26	E	tygerkat	06/29/2012	03/03/2013	03/01/2013	Micro	1.5	1.5	Remember
GC3JJ3W					01/28/2013		Rootin' for JUNEBUG!	22.26	NE	Fire Elemental	05/01/2012	03/03/2013	01/28/2013	Small	2.0	2.0	RootinFo
GC450TY					02/13/2013		Step it up!	11.90	NE	zeped	01/27/2013	03/03/2013	02/13/2013	Small	2.5	2.5	StepItUp
GC46Y...					03/03/2013		Stop For Our Cache	5.67	NE	Mike.spurgin	03/02/2013	03/03/2013	03/03/2013	Regular	1.0	1.0	StopForO
GC465X5					03/02/2013		The Kids' Hide	16.25	E	PreludeX	02/17/2013	03/03/2013	03/02/2013	Small	1.5	1.5	KidsHide
GC44ZYF					03/02/2013		Troop 430 #2	7.58	NE	startrekncc1701	01/26/2013	03/03/2013	02/19/2013	Small	1.0	1.5	Troop432
GC3TN77					02/22/2013		Unfortunate	21.01	E	Fire Elemental	08/14/2012	03/03/2013	02/22/2013	Micro	2.0	2.0	Unfortun

This view is sorted by cache name in ascending order.



Filters

If you want to search for some cache information or some data in your database, filters are your best choice. Macros can also search for specific information, but filters can get you most of the way there.

You access the filter menu from either the Search menu tab on the main file menu or by clicking the icon near the top right with the magnifying glass next to the page.

Click on either and the filter menu dialog box will appear. It can be a little daunting at first but play around with it to see what you can do.



Filters

Set Filter Centre point = Home

General | Dates | Other | Logs | Arc/Poly | Children | Attributes | Where | Custom

Select a saved filter: None Reverse filter

Cache name: Contains []

Full text search: [] Highlight HTML Use RegEx
Where to Search: Everywhere Selected Items Only
 Logs Notes Description

Distance: Any distance

Found status: Found Not Found

Placed by: Contains []

Difficulty: Less than or equal to 5.0

Terrain: Less than or equal to 5.0

Available status: Archived Temporarily Unavailable Available

User flag: Set Not set Has travel bug: Yes No

User data: Contains []

User data 2: Contains []

User data 3: Contains []

User data 4: Contains []

Has user notes: Yes No First to find: Yes No

Travel bug name: Contains []

Source: Equal to []

Owner Name: Contains []

Symbol name: Contains []

Premium only: Yes No

Favorite points: Any

Go Reset all Reset tab Save Delete Cancel Help



Filters

There are several tabs on the Filter menu:

- ❑ General – Basic filter criteria
- ❑ Dates – Allows you to filter by dates in ranges or on a date
- ❑ Other – Filter by cache type, elevation, bearing, container size, country, state, etc.
- ❑ Logs – Filter by type of log, date of log, found, didn't find, etc.
- ❑ Arc/Polygon – Filter by a specific location in either an arc or by a user defined polygon (square, rectangle, weird shape)
- ❑ Children – Filter by the children in a GPX file. Children are what GSAK refers to as additional waypoints.
- ❑ Attributes – Filter by attributes
- ❑ Where – Uses SQLite language to filter by
- ❑ Custom – Set your own



Filters

GSAK comes with certain default filters. You can see these at the top of the database view page where it says Select a Saved Filter. None is the default. Default filters are:

- ❑ None – No filters in effect
- ❑ Last 2 DNF – Shows those caches whose last two logs were DNF's
- ❑ My Found Caches – Filters by showing you only the caches you have found (these are typically highlighted in the GC code column with yellow)
- ❑ Not Yet Found – Filters to show only caches that have not been found yet. Good if you are looking for a First To Find
- ❑ User Flag – Filters to show only those caches where you have set the User Flag (clicking the box in the User Flag column – that's the one with the funny looking guy standing there!)



Filters

To get used to filters I suggest you play around with the default set filters that come with the program. Once you get familiar with those you can start to define you own filters.

I have created a few of my own to use to manage my owned caches. I use a filter to show if my caches have a Needs Maintenance log in the recent logs and if only one log is shown. Sometimes when you update or download updates to your caches with a pocket query it only gives you one log. I like to add more logs to keep some of my statistics up to date.



Making Your Own Filter

To make your own filter open the filter dialog box and begin selecting your criteria. You can use it once or you can save it for later. When I set up my Needs Maintenance filter I did the following:

I started with the Last 2 DNF filter and then kept everything on the General tab the same.

I then went to the Logs tab and made the changes shown in yellow. GSAK will keep a record of your changes in yellow I guess since that is how it still shows. It also highlights the changed tabs in red. It seems they do this for all changes from the None filter.



Making Your Filter

I changed the Logs to Search criteria to Last 4

I changed the Required Count to Greater than or Equal to 1 to pick up all logs past the first one

I selected the types of logs I was looking for, in this case Needs Maintenance or Needs Archived

Set Filter Centre point = Home

General | Dates | Other | **Logs** | Arc/Poly | Children | Attributes | Where | Custom

Log Date: Not applicable

Logs to search: Last 4 Found Not Found Others

Include/Exclude: Include This will include/exclude the cache in your subset if the following conditions are met

Required Count: Greater than or equal 1

Log Types: Select all (Uncheck to select individual log types)

<input type="checkbox"/> *Other	<input type="checkbox"/> Publish Listing
<input type="checkbox"/> Announcement	<input type="checkbox"/> Retract Listing
<input type="checkbox"/> Archive	<input type="checkbox"/> Temporarily Disable Listing
<input type="checkbox"/> Attended	<input type="checkbox"/> Unarchive
<input type="checkbox"/> Didn't find it	<input type="checkbox"/> Update Coordinates
<input type="checkbox"/> Enable Listing	<input type="checkbox"/> Webcam Photo Taken
<input type="checkbox"/> Found it	<input type="checkbox"/> Will Attend
<input checked="" type="checkbox"/> Needs Archived	<input type="checkbox"/> Write note
<input checked="" type="checkbox"/> Needs Maintenance	
<input type="checkbox"/> Owner Maintenance	
<input type="checkbox"/> Post Reviewer Note	

Logged by: (and log is by a certain person)

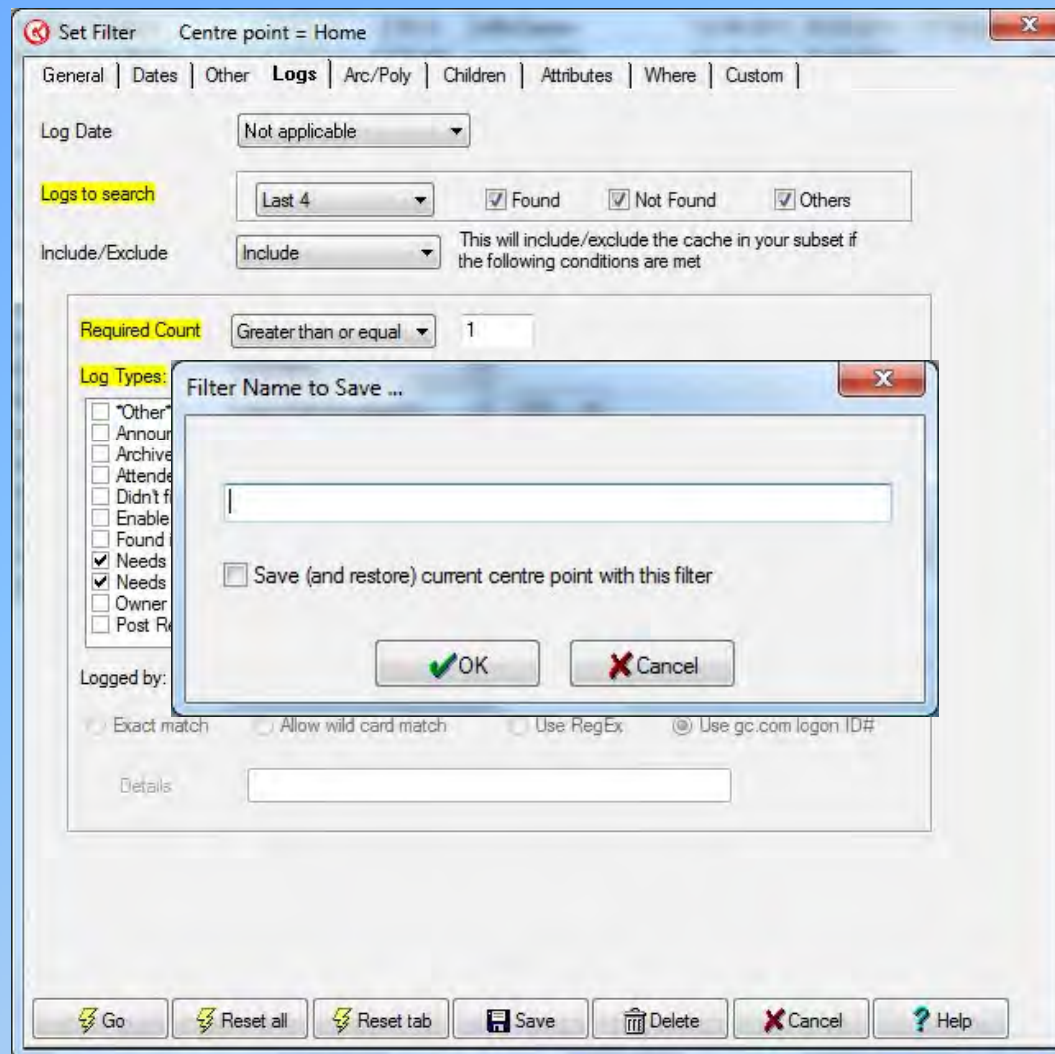
Exact match Allow wild card match Use RegEx Use gc.com logon ID#

Details:

Go Reset all Reset tab Save Delete Cancel Help



Saving Your Filter



When you are all done and want to save your new filter for future use, click on the Save button at the bottom and then enter the name of the Filter you want to save. It will appear in the drop down menu of Saved Filters now.



Filters & Sorting

I had to add this file to my group as this morning I saw about 6 Challenge caches posted. If you are not familiar with Challenge caches they have the ? icon like a puzzle cache but they are actually at the posted coordinates. You just need to meet certain criteria in the cache description to log you find.

Today some of them included previous finds that were:

- ❑ Five caches with a certain word in the title
- ❑ A cache with an elevation of at least a certain height
- ❑ A cache I found that hadn't been found within 6 months of when I found it.
- ❑ A cache placed in each year since Geocaching first started.



Filters & Sorting

For the Five caches with a specific word in it I used a filter.

- ❑ I set the database to My Finds (a database where I keep track of all of My Finds – Needed for Find Stats Generator).
- ❑ On the General Tab from the Filter dialog box menu I set the cache name contains to the word required (I typed in the word for the challenge).
- ❑ I clicked on the Go button and it came back sorted with those caches I have found with a specific word in the title.
- ❑ I pasted that view into a picture program I have and uploaded it with my log (using the GC.con Access feature in GSAK) to confirm I met the challenge requirements.

This was an example where Filtering worked for me.



Filters & Sorting

Another challenge cache asked me to show a cache I had found in each year since Geocaching first started (2000).

- ❑ For this challenge I set up a view that include the Placed Date of the cache and then sorted from that column in the My Finds database.
- ❑ I then used the User Flag feature to select one from each year placed that I found to limit the view to only that required for the challenge.

For this challenge I used both sorting and filtering to verify my requirements. This is an example where both were needed.



Filters & Sorting

One of the challenges asked me to verify I had found a cache that was placed at an elevation over 8500 feet.

- ❑ For this challenge I used the filter menu to search for those in the My Finds database.
- ❑ I selected the Other tab in the filter menu and then near the bottom there is a tab that allows you to search by elevation.
- ❑ I selected greater than or equal to and then entered the height in the box that appeared when I selected that feature.

My database was filtered for all caches over this height. I used this to verify my requirements. This is an example where filtering was used to show I met the challenge.



Filters & Sorting

For the challenge where I need to verify I found a cache that wasn't found for at least 6 months before I found it I gave up on the filters and sorting and went to the GSAK forum site and found a macro that worked just fine!

This is an example where another tool or feature of GSAK made it easier to complete the challenge.

See my other tutorial on Macros.



Filters, Views and Sorting

Filters can add a lot to the GSAK experience. Play around with the to see what you can do.

Views help you manage the information you see or want to see. Find what works for you and use that for a while. You can also modify you view if you just need to see if you meet a challenge or not.

Sorting helps you sort through the gobs of information in your databases.

I hope you learned a bit more about GSAK. For more information go to the GSAK site and look around.

