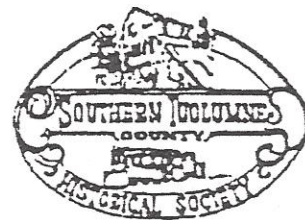


# Along The Hardin Flat Road

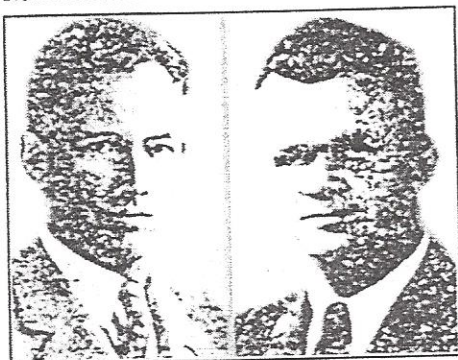
*A Series of Historical Sketches by Rosa E. Quinn*



## Volume 3 The Founding of Berkeley Tuolumne Camp

### Opening of the City Camps

In 1921 the city of Berkeley, in the Bay area, began founding recreation camps for summer vacations. Berkeley's City Manager at the time was "John D. Phillips" while "Charles W. Davis" was the District Superintendent of Recreation and Parks.



*Charles W. Davis and William B. Rhodes*

The first camp to open was Berkeley Tuolumne Camp in 1922 under the management of "M. Van Rennessalcar." The rate for camping was \$1.25 a day. The men were required to put in at least one hour of work per day. This might have included building tables and stools, setting up tents, cutting wood for the kitchen stove or keeping the grounds clean. The ladies were required to help in preparing the food in the kitchen, setting the tables and serving the food, cleaning off the dishes and washing them.

Alfred E. Parker, from Berkeley, was on the staff that year. He remembers very well the hardships at camp. These included: outdoor tables, tents with floors of dirt, oil torches for lighting the grounds, candles in the tents, also washbowls and pitchers of water carried into the tent from the river for washing and bathing.

John R. Ward was a 6 week camper in 1922. He writes of his memory of the hardships in camp: no showers and outdoor pit toilets.

Charles Knight and his son Allen, from 1726 1/2 Grove St., also remember the great fishing. Knight recalls trading off on the early morning wood cutting in favor of going fishing. He would get a good catch of trout for breakfast in about one hour. The fish were plentiful and the limit was 25 per day at the time.

The Berkeley Echo Lake Camp, located at the summit of Placerville Pass at an elevation of 7600 feet, on Highway 50, offered hikers a paradise in 1923. The Manager at the time was "Emery J. Curtice."

Berkeley Cazadero Redwood Camp, along the banks of Austin Creek, in the Russian River County, near sea level elevation, was the third camp to open. "Clifton D. Boyack" was the Manager.

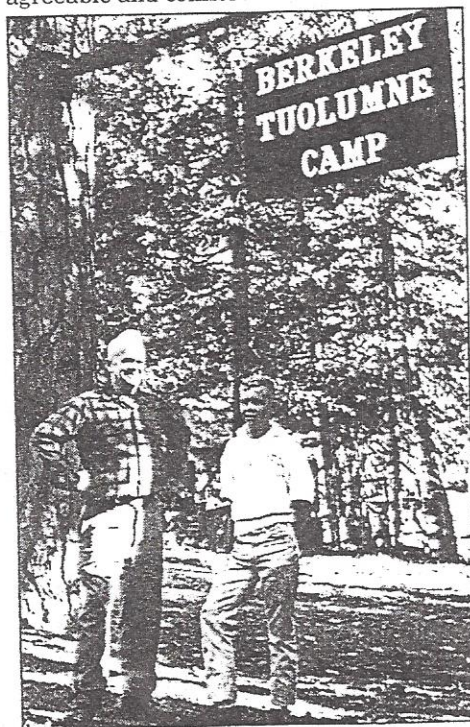
### *The Rodeo of 1923*

George Warren was the Tuolumne Camp horse wrangler. He managed the horses at a spot with a water spring a little ways to the west of camp. This is where the archery grounds are now located. Alfred E. Parker tells this story of when he was Assistant Camp Manager in 1923. It seems George Warren put on a Bar-B-Q and Rodeo at Buck Meadows for the 4<sup>th</sup> of July. Practically all of the Berkeley campers went. There were cowboys and people there from miles around. They Bar-B-Qued two cows and three sheep but had such a crowd that people were scrounging to get food. George was in charge of the Rodeo. He took part in everything, calf roping, steer wrestling, bull riding, and took 1<sup>st</sup> place all around. He was quite a cowboy. He could really twirl a rope.

### Berkeley Bill as Manager

William B. Rhodes was a Schoolmaster turned Camp Manager. During the school year he was in charge of transportation safety and special assignments for the Berkeley Unified

School District. He was formerly the Principal of Lincoln and Oxford Elementary Schools. He became Camp Manager at the Cazadero Family Recreation Camp in 1928. This is where he met Elyse Winters. She had been a staff nurse there since 1927. Bill and Elyse were married on April 6, 1939 and came to manage Berkeley Tuolumne Camp in 1941. Elyse came on staff as a nurse and helped with staff management. She was also the dietician for the kitchen. Some of the first things Bill did toward improving the camp were to build a walk-in refrigerator for the kitchen and install a power plant for electric use. The Pacific Gas and Electric Co. didn't get into the area until 1953. Bill also improved the water and sewer system. All of this made camping more agreeable and comfortable.



*William B. Rhodes and camper*

By 1941 the living arrangements had changed a lot. The campers still donated a lot of their help around camp; the men



kept the grounds cleaned and watered down, the ladies helped with the cooking and the teenagers helped in serving the food. That kept the rates down to \$3.50 per day. They had kerosene lanterns in the tents, cabins with board floors and sides, roofs of canvas, steel cots with mattresses and hand-made stands with drawers for a nightstand and dresser combination.

Their entertainment center consisted of an amphitheater and a campfire circle. They would have a campfire two evenings a week and sing songs (the staff and campers together). Bill would get the teenagers to put on plays and different talent acts in the theater to entertain the campers. Square dancing was also taught.

They had horseback riding, hiking trails, arts and crafts classes for the children, horseshoe pitching games, tennis, volleyball, badminton, a fishing club for the children, and ping pong (table tennis).

As the Berkeley Tuolumne Camp grew in popularity, improvements to fixtures and facilities were made so that they could handle not just 50 or 100, but hundreds of guests. In the 50s they took in families as well as special groups. These included music groups, girls camp, boys camp, church camps, different groups of city officials, and groups of doctor's clubs. Some years the camp would not open until 2 months after school vacation started or it might start 2 weeks before. Also in the 1950s the staff and campers, enough to make a team, would go to the Hardin Flat team and play baseball on Sundays.

Sometimes Bill would go to the San Francisco Camp at Mather and entertain campers in the evenings. At times he would take his recorder machine to the café in Hardin Flat and make records of the singers and musicians that showed up for his square dance class. Bill, some of the staff, and some of the campers joined the dancing at Hardin Flat quite often.

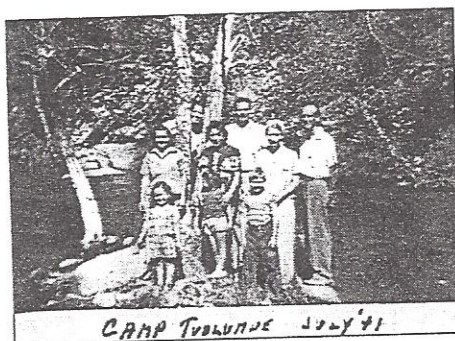


Jim Billings perfecting his fly casting - July '41

As Bill and Elyse Rhodes got settled at Berkeley Tuolumne Camp they started their family. Milly, a beautiful little girl, arrived September 30, 1944. Jeff arrived February 20, 1949. He was a cute little thing but wasn't well. He was in the hospital a lot for the first year. Jeff finally got to growing by the time he was 2 years old. Liza Jane, "Janie," arrived December 17, 1950.

The children grew up in camp. Neither Bill nor Elyse let the family interfere in their camp management. They had their own family residence and kept a baby sitter. The children were just part of the camp "fixtures" and had the run of the camp. As teenagers they began volunteering their help for this and that and then each of them took their turn at staff paid employment. Bill took Jeff as a sidekick helper. He learned all about the camp.

Jeff met his wife Jane in camp. They raised two boys and now they take their turn at being on the staff in summer. Jeff and family still come to Tuolumne Camp on their vacations. Millie is "Millie Bates" and has worked in camp a lot. She and Janie still come to Tuolumne Camp for their vacations.



Lower swimming hole, July 1941  
Left: Marge and Tad (between trees) Barnum with daughter Gail. Right: Janice and Jim Billings, with their son Larry. Center: Couple and daughter unknown

## Jim Billings and other Campers

As a young boy, in the third grade of Arford Grammar School, during the year of 1922, Jim Rush began camping at Tuolumne Berkeley Camp. He has been to all of the Berkeley Vacation Camps but prefers Tuolumne Camp. He still comes with his family and they all enjoy every trip.

Many of the old staff are long time repeat campers. These include Willie the Cook and Kitchen Manager, Vivian



Young fisherman at camp - 1947. Debbie Billings (Granger) and brother, Larry Billings

Dable and husband who were staff members in the early 40's, Gail and Kathy Barnum who were on staff in the 50's, and Will and Jane Lotter. These are some of the satisfied repeat campers.

Jim Billings and wife, Janice, along with their two children began camping at Tuolumne Berkeley Camp in 1940 and continued until 1972. He brought his family vacationing all summer while donating his time and efforts to helping to improve the camp and organizing projects for entertainment of the campers. He organized the Jim Billings Fishing Club for children, a hiking group for boys, and also the clean plate club during the war.

Larry Billings (Jim's son), was born in 1934, he was on staff from 1952 - 1953. Jim's daughter Debbie grew up in camp as a pesky little gad-about, everyone loved her though. Debbie was born in 1941 and was on staff 1960 and 1962. She had a daughter Laura in 1964. She and Laura moved to Buck Meadows when she took the teaching post at the Buck Meadows Elementary School in Hardin Flat during the 1967 - 68 school year.

Debbie married Leonard Cassaretto, from Groveland, in 1969, and they had Pamela in 1971 and Todd in 1972. In 1994 Debbie purchased 3½ acres of land on the far west edge of Hardin Flat overlooking the site of her beloved





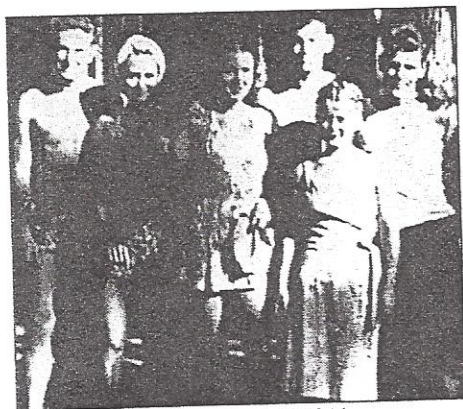
Back Row: Bob Dable, Johnny Vaughn, Jim Billings  
Front Row: Tad Barnum, Andy Stokovich, Earl Strader

schoolhouse. She plans to retire and build a home there some day.

## Johnny Vaughn

Johnny and Shirley Vaughn are two of the long time satisfied campers of Berkeley Tuolumne Camp. They were also staff members. They began coming to the camp from the Bay area as

youngsters. In 1944, Johnny went into the Navy but still came to the camp on his leave. In 1946 he was at Tuolumne Camp when he met Shirley Thatcher from San Mateo, CA. They were married in 1951. In 1947 Johnny went to work on the staff as maintenance and was Bill Rhode's right hand man from 1947 - 48 and 49. The following years Shirley still came frequently through the summers.



Staff members of 1946  
From left: "Lefty" Fountainrose, Peggy Saph (Wolfe), Vivian Saph (Dable), Bob Dable, Shirley Thatcher (Vaughn), and Johnny Vaughn

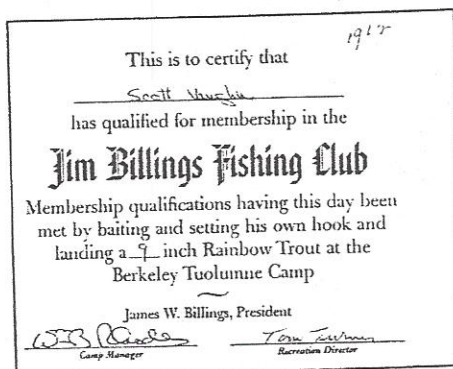


Johnny Vaughn and son, Scott, in swimming hole - 1954

They had a home in El Cerrito, California, and raised a family of 3 boys. Scott was born 1952, Mike in 1955, and Allen in 1956. They came to Tuolumne Camp on vacation every season.



Scott Vaughn received this certificate in July of 1955 when he was almost 3 years old.



Scott Vaughn received this certificate in 1962

In 1970 they bought a lot in Hardin Flat and built a lovely vacation home. At camp, the boys took part in just about every activity that was offered, including the clean plate club and fishing club. Eventually, they each had their turn at working on the staff. The Hardin Flat cabin is still owned by them.

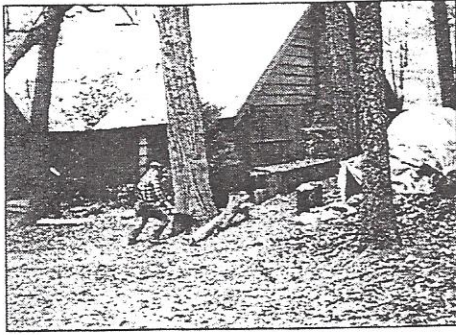
In 1990 John and Shirley bought a home in Pine Mountain Lake. They still live in Groveland today and visit Berkeley Tuolumne Camp.

## Dining Hall Tree

When Berkeley Tuolumne Camp was first started, the dining hall was made up of just picnic tables clustered at the door of the kitchen tent. As the number of campers grew it was enlarged to a platform that extended out to a very large ponderosa pine tree. In the early 40's it was enclosed with a roof that

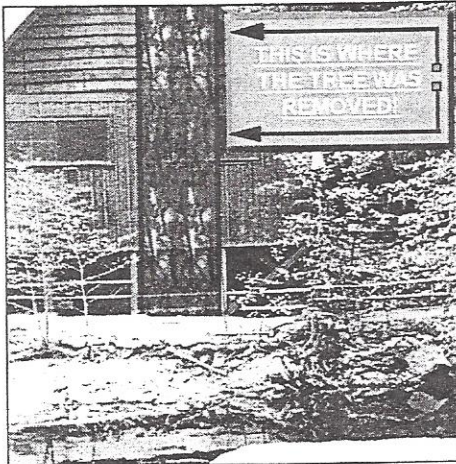


included the pine tree inside the dining hall. A table was built around the tree and this was where the staff usually ate.



*David DeGraff at work*

After a few years the tree bark started flaking and falling off and began to get infested with ants and other insects. The tree was deteriorating and it wasn't sanitary enough to be in the dining area. Early in 1958 Bill Rhodes talked with Harold Guinn from the South Fork Lumber Co, at Hardin Flat, about felling the tree. Harold brought in his main timber man (David DeGraff) to look it over. They set a date for the job and got Pickerin Lumber Company's tree climber from Tuolumne, California, to come help.

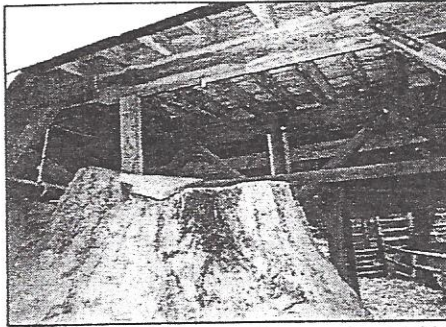


*Representation of where the tree was located*

The tree was 51 inches in diameter. David told Bill to cut a section out of the building allowing him about 10 inches for leeway and he would fall the tree into the swimming pool. The climber went up the tree. He, Harold and David let the limbs down to the ground by ropes. Then David fell the tree into the pool as he had said he would. Wayne Morris (Corkie), Harold's dozer man, cleaned the logs and brush out of the swimming pool and hauled it away. It was a remarkable job and a good show for the campers. They were quite an audience. It was a successful job and a

day that will be well remembered by everyone who saw the work. They took 3 big logs to the sawmill at Hardin Flat. The camp staff cut the smaller parts up for fireplace wood.

The stump noticeably remains in the arts and crafts center today as a worktable under the floor of the dining hall. A magnificent job.



*The stump which is sometimes used as a table*

## Michael McEneany

Michael McEneany is one of the long time repeating campers. He began vacationing at Tuolumne Berkeley Camp as a small child with his grandparents. He grew up in camp, doing arts and crafts, fishing, and hiking every summer. Michael was a very close friend to Johnny Vaughn and his family as they grew up enjoying the country.

In the years 1981 into 1984 the city and county of San Francisco and the Modesto and Turlock Irrigation Districts decided they wanted to build a dam (The Golden Rack Project). They wanted to locate it on the west edge of Hardin Flat, on the South Fork of the Tuolumne River. This would inundate all of Hardin Flat and Berkeley Tuolumne Camp in over 100 feet of water. Mike formed "The Friends of Berkeley Camp Club" and joined "The Friends of the River Group." The club along with Rosa Guinn (Chairman of a family club) from Hardin Flat all joined the Tuolumne River Preservation Trust at Fort Mason Center, San Francisco. Marty McDonnell, the owner of a white-water rafting business, from Sonora, California, was in the Tuolumne River Preservation Trust. All the clubs joined forces. John Amadio, the Chairman of the group (a committee of 31 people) was chosen to go to Washington, D.C. on May 3, 1984 in protest of the Dam. Also present to protest the Dam were Richard Chamberlain, the actor, who was a regular trout fisherman of the Big "T", Michael McEneany and Rosa Guinn.



*Richard Chamberlain and Rosa Guinn*

They testified in the 98<sup>th</sup> Congress of the United States of America and witnessed before the United States Senate in favor of the Richard H. Lehman Bill, R.H. 5083 Lehman, protecting the 83 miles of the main Tuolumne River as a national wild and scenic river. Michael worked very hard for the Berkeley Tuolumne Camp.

Michael and Rosa traveled together and roomed with the City of Berkeley's lobbyist, David Wearan, and his wife in their home at 517 Albany Ave., Takoma Park, Maryland. The bill overwhelmingly passed on September 12 through the House of Representatives, 368 to 41, and on September 28 the president signed it into the California Wilderness bill which designates the Big "T" a National Wild and Scenic River.



*Michael McEneany*

Michael met Trish, his wife, in 1968 at U.C. Berkeley. They were married 20 years later. Their daughter, Rachael, worked on the staff at Tuolumne Camp during the seasons of 1994 - 1995. The family attends camp every summer.



## Operating the Camps from the City

Vida Rozance was the Camp Officer and Reservation Clerk in the city of Berkeley. If you were ever a camper at Tuolumne Camp you knew her and she knew you, even though you had never met. She was the main big cog that made the wheel turn, operating the camps. Her work was very accurate and efficient and this was one of the reasons the camps were run so smoothly. She always came to camp for her vacations. Vida worked 7 months out of the year, which left her time to spend with her husband, children and five grandchildren and also time to travel.

## Raising Money for Projects

Any time the camp was in need of a sizeable repair or added project, Bill would have the camp put on a carnival of some kind. He would also get in touch with the city's Director of Special Projects in Berkeley. They would have a carnival and donate to the project. Bill had a way of getting things done. Everybody loved Tuolumne Camp and was there to help raise funds for the rebuilding of the dining hall at Berkeley Tuolumne Camp. The camp division of the Berkeley Recreation and Parks Department sponsored a Flea Market April 24<sup>th</sup> in 1962 in Berkeley. The city council established the Arthur K. Beckrey Memorial Fund and their goal was set for \$25,000 for the Dining Hall project. Over 500 donations were received. The Co-Chairmen of the event were Harold Johnson, who was Recreation Superintendent of Berkeley's Recreation and Parks Department, and William B. Rhodes, Tuolumne Camp Manager.

## The Anniversary Party

There is an atmosphere of loyalty and love to this place that is not commonly found in camps. Allegiance has flourished because of the dedication of Bill and Elyse Rhodes.

Bill's job never ended: from rising in the morning he was there to lead the crowd. He was continuously looking for ways to improve the camp and make things more comfortable for the visitors from June to September. When the bell rang at 8:30 pm for the campfire he was

always found in front of the audience ready to lead the campers in song.



*Bill and Elyse at Anniversary Party*

Bill was loved by all who knew him. He retired February of 1971 as Director of Special Projects for the Berkeley Public Schools. He had been with the Department as Principal and held administrative duties for over 35 years. To celebrate the Rhodes thirty-year anniversary, several campers got together and prepared a letter announcing the notable year and requesting a contribution toward a gift, "a trip to Hawaii." Ed Skeels, Inspector on the Berkeley Police Force, operated the fund headquarters at his home. Contributions and letters of praise began flooding his mailbox daily until the deadline.

When the day arrived for the presentation the camp became swamped with old campers without reservations. Room was made for them or else they camped outside the camp. They came regardless of what accommodations they might find.



*Bill Rhodes*

Three representatives from Berkeley were also on hand for the ceremony, the Director of Parks and Recreation - Walter Toney, City Councilman Thomas McLaren and City Manager William

Hanley. The program began at 9:00pm on September 27, 1971. The campers were attired in Hawaiian garb and paper leis. Bill and Elyse were draped with Plimaria and Vando orchid leis flown in from the islands by Jim Billings, a regular camper since 1940.

The staff then offered an entertaining round of musical skits depicting a make believe trip to Hawaii. At the close of their performance, Ed Skeels called Bill and Elyse to the front and made the presentation. A parchment scroll with the names of all the contributors, a large facsimile of a check with Diamond Head in the background, an airlines flight bag and oodles of brochures on the enchanted isles were included with the gift of \$2,100.



*Bill and Elyse*

Moved by the magnitude of the present, Bill expressed appreciation while Elyse stood overwhelmed by his side. Then, as he had done for 30 years, Bill led the campers in song with very special feeling. The crowd responded and the hall rang with, "There's no place like Camp Tuolumne."

## Elyse Retires

After Bill's heart attack and passing on August 2, 1975, Elyse and Cece Pereira (Michael McEneaney's sister), the Assistant Director of Tuolumne Camp, stayed on at the camp through 1985 along with the assistance of some of the long time campers.

In 1977, Bill Welch spent the summer and shared his help. Jeff helped. Millie, Elyse's daughter, helped a lot as the camp closed in 1985. Elyse retired to Aptos, California where she lived near her son Jeff and family.

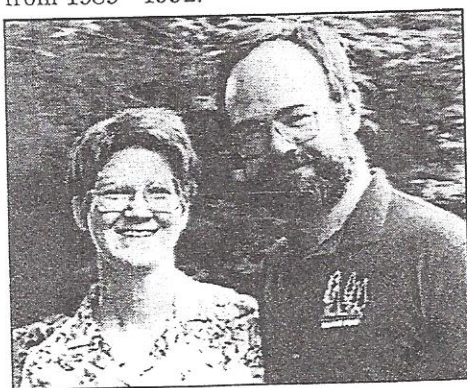


## New Managers

Beginning the vacation season of 1986, Gerald E. Horn became the Director of Berkeley Tuolumne Camp. Jerry completed his Masters degree in recreation administration at San Francisco State University in 1985. His wife, Janet M. Sowers, a geologist, began working at Tuolumne Camp as Nature Program Director in 1987. Larry Shub began there as Assistant Director in 1989.

Jerry and Janet met while working at a youth camp in Georgia and were married in 1981. They then directed a youth camp in North Carolina from 1981 through 1985. Both Jerry and Janet had spent summers in camps while they were children, so camps have always been a big part of their lives. In 1993 baby Clara joined the family and continues the camp tradition. While not at Tuolumne Camp they live at their home in El Cerrito, California. In the off season Jerry does the many things that are needed to get camp ready for the next summer. Janet works part time as a Geologist for William Lettis and Associates Inc., an earth sciences consulting firm.

Jerry and Janet love Tuolumne Camp and plan to continue serving there into the foreseeable future. The present Food Service Manager is Cynthia Johnson and the summer of 1997 is her fourth season. Linda King of Big Oak Flat, California, served in this capacity from 1989 - 1992.

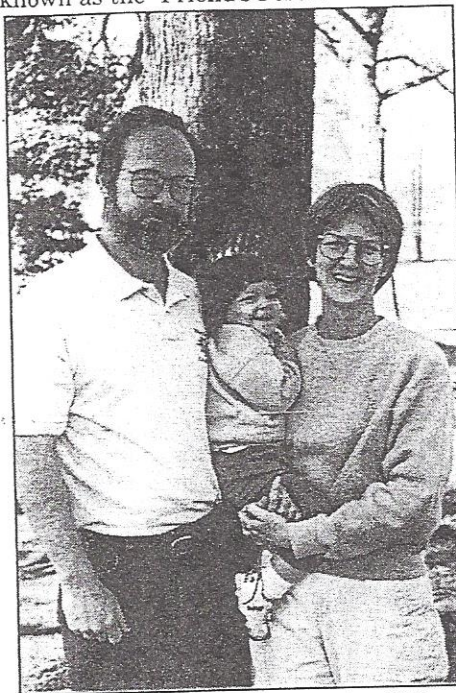


*Jerry and Janet - 1992*

Jerry and his staff brought many changes to Tuolumne Camp both in improving and updating the facilities and starting new programs for campers. Program highlights include Kiddie Kamp for preschoolers, the Nature Center, Tuolumne Rangers for elementary age children, nature walks and talks, and the volunteer staff

program for teens. New or updated facilities include a rebuilt footbridge, a new deck on Rhodes Hall, two new play structures, new and rebuilt cabins, new laundry facilities, new outdoor stone showers, a rebuilt kitchen, and a water treatment plant.

Many of the new projects are conceived and carried out with the assistance of volunteer campers. Every Memorial Day weekend over one hundred campers build cabins, paint, haul sand, build trails, clear brush and do whatever is needed to get camp ready for opening day. The Friends of Berkeley Camp helped raise money for projects such as the Rhodes Hall deck, now known as the "Friend's Porch."



*Jerry, Janet and Clara - December 1995*

### *Carpenters and Repairmen*

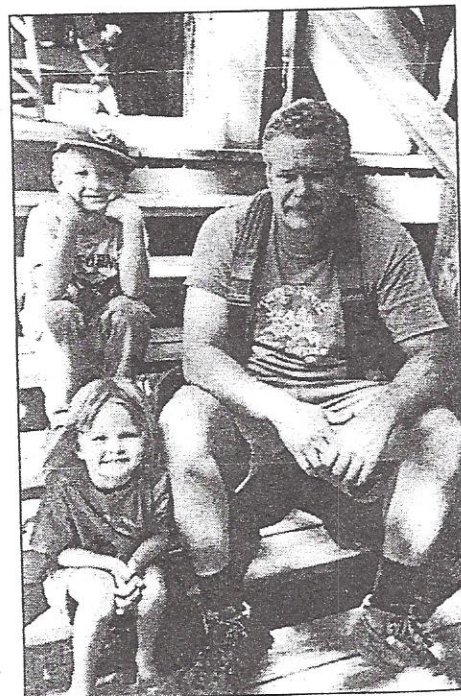
In March of 1987 Tom Souza (from 1986 -1986), Bill Nickell (just starting), along with Jerry Horn (Camp Manager), Darren George, and Dan Benevidas (the maintenance man from Echo Lake Camp) started doing a little repairing and improving on Tuolumne Camp. It snowed a lot that spring and everyone helped keep the snow off of the small trees to keep them from breaking. The camp looked like heaven in the snow. Bill and Tom rebuilt the "B - Box," the walk in refrigerator to the kitchen. It was very slow work (so cold). Dan started on a new cabin (#20) named Echo Cabin. They remodeled the ladies main bathroom, expanding and adding 2 commodes, one for handicap access, and

put in the beautiful skylight. They did a lot of improving that winter, making ready for the 1991 season.

## The New Bridge

Bill Nickell, who works for the Berkeley Tuolumne Family Camp as a carpenter, lives about 3 miles east on Hardin Flat Road. He and his wife, Lauren, have 2 children. Andy is 10 years old and Amy is 7. They live at Sunset Inn and attend Tenayo Elementary School in Groveland.

In 1989, talk of needing a new bridge over the dam that forms the swimming pool was circulating. It became apparent that the existing bridge that had been built 30 years ago was becoming unsafe. Jerry Horn consulted with the City of Berkeley engineers about this matter and ordered beams from Oregon for the new Bridge. The beams that arrived were made of laminated wood and weighed about 2.5 tons each. First the old bridge had to be torn down. They used a backhoe and a front-end loader for that, and also, to lower the new beams into place.

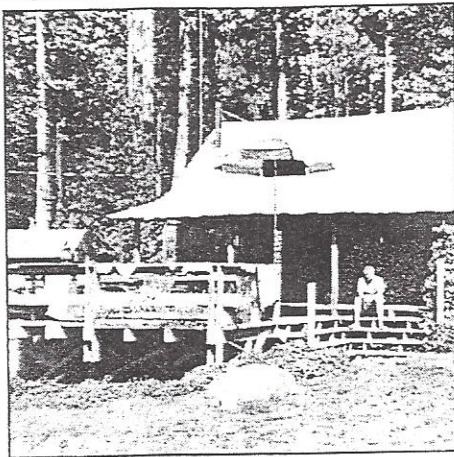


*Bill, Andy and Amy*

Bill, Tom and Jerry were horrified that the new beams were so massive. They looked very much out of place. The three got their wits together and came up with a basic concept for the design of the bridge that would take advantage of the massiveness, yet still fit in with the natural environment. Bill worked out

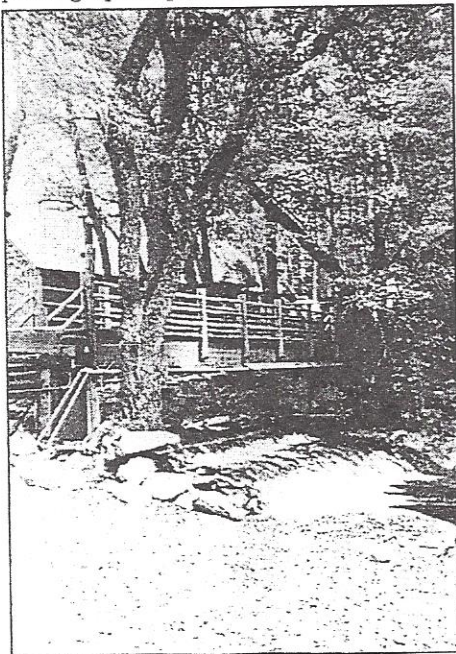


the details and was put in charge of the project. The actual building of the bridge began in November of 1989.



*Bill Nickell at home*

Darron George, Camp Maintenance Supervisor, came up several times during the fall, winter and spring to help Bill. He would stay with Bill and his wife, Lauren. By April 1990 he was living at camp full time. First, Bill and Darren stained the beams and put the deck on. They then searched the woods for small dead trees for the posts and rails. They would cut and drag them into camp where they would use a hand drawing knife with close care and patience to strip the bark off. First putting up the post and then the rails.



*The New Bridge*

Sometimes they worked in the snow and cold keeping the snow shoveled off of the bridge. The stripping of the poles and the work on the bridge was very laborious and tedious. Bill did very

caring work. Each rail took ½ hour just to strip and then the ends had to be notched and installed. There were others who helped on the bridge work, but Bill watched over their work very closely and caringly. He did it all with love, care and patience, enjoying every moment of it. That is why it turned out to be such a beautiful bridge. It was finished by June for the opening of camp season. It was truly a labor of love.

Bill has worked for Berkeley Tuolumne Camp since 1988. The projects he has worked on at camp include, the porch of the recreation hall, dressers for the tent cabins, remodeling the showers and laundry room and kitchen, the boys camp, several new cabins, and the Kiddie Kamp play area. He also looks in on the camp during the winter. Camp work only takes part of Bill's time. He does carpentry for other people in the area.

Every bridge must have a guardian. If you look underneath this bridge from the island side you will see the Guardian of the Bridge. It was created by Berkeley camper Rus Griswold. In the flood of '97 it rode downstream with the washed out bridge and is still attached today.

Did you know that the fire hydrant water fountain was donated and installed in 1967 by Fritzes Stadelhoffer, who owned the Berkeley Pump Co? You can see the signature of William Rhodes in the cement step. The water fountain can be seen on the left side of the "The New Bridge" picture at left.

## The Flood of 97

It rained, rained and rained constantly the last day of December 1996 and on through the Second of January 1997. It was the worst flood ever in all of the Tuolumne's south watershed area. The new footbridge and its Guardian's Faith were just not enough. The floodwater was much too

strong and took the bridge down stream. Bill and Jerry found it lodged on the Yosemite Lake's car bridge.



*Disaster Strikes*



The flood did a lot of damage all over Tuolumne Camp. They immediately started reinstalling the bridge. There were a lot of repairs to be done all through the camp, including three cabins that had to be rebuilt. They had to replace all of the water lines, the water and sewer system, all of the electric system, and some of the toilets. The flood completely demolished the arts and craft area. The water was very strong and washed out one of the rocks next to Firefall Rock which turned over on to the Beaverhead Rock, water went under it, turned it around and it sank down. There is no Beaverhead left.

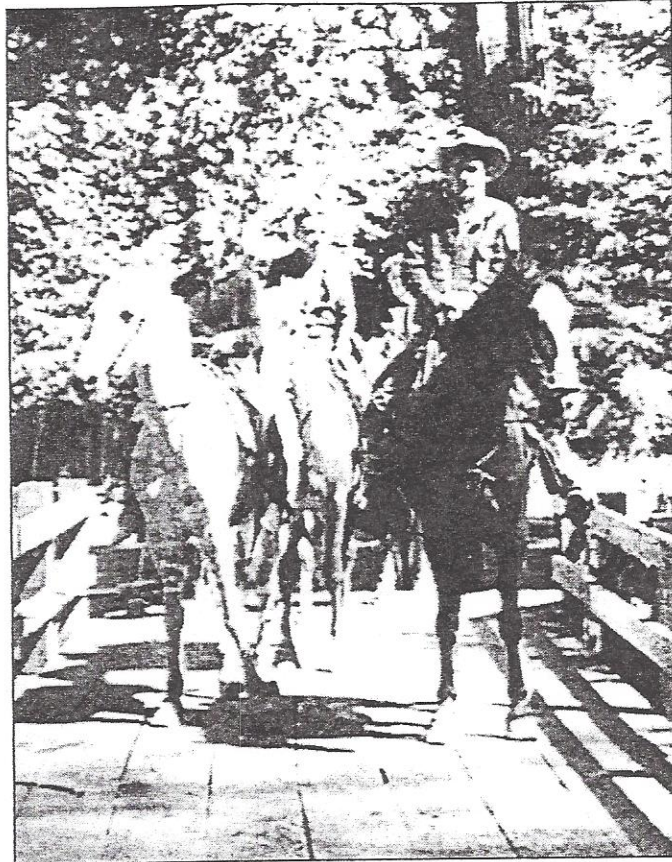
A lot of the long time campers and friends of the river took advantage of our Memorial Day vacation project week; they got the camp in good shape and did open in June as usual.



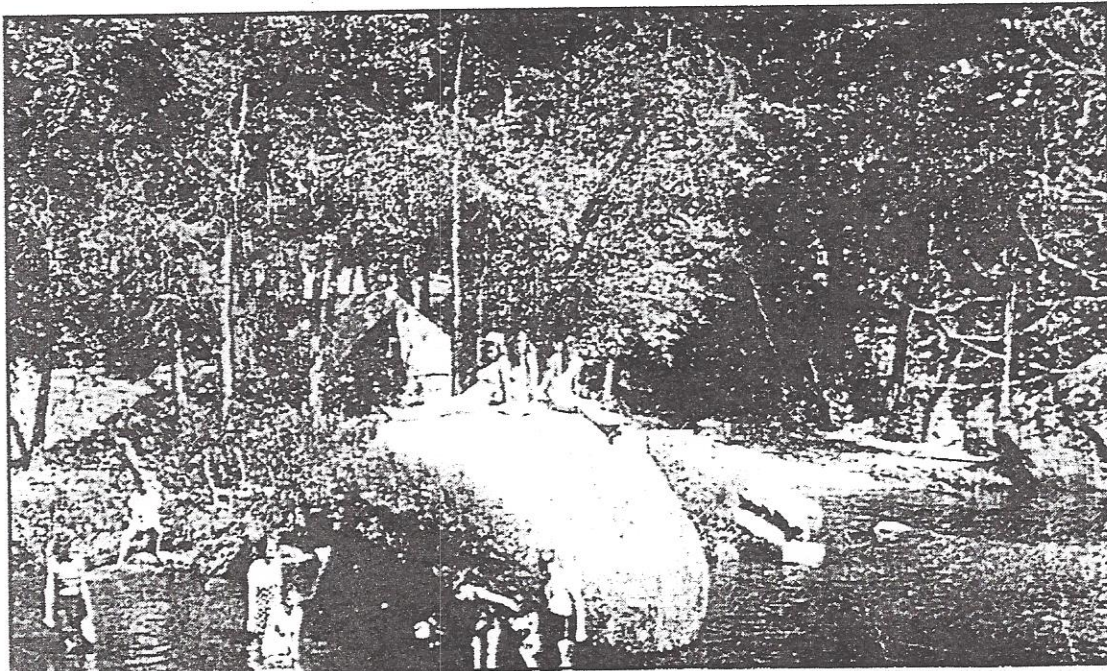
Rosa Guinn author of "Along The Hardin Flat Road" series.



## Pictures from early camping days



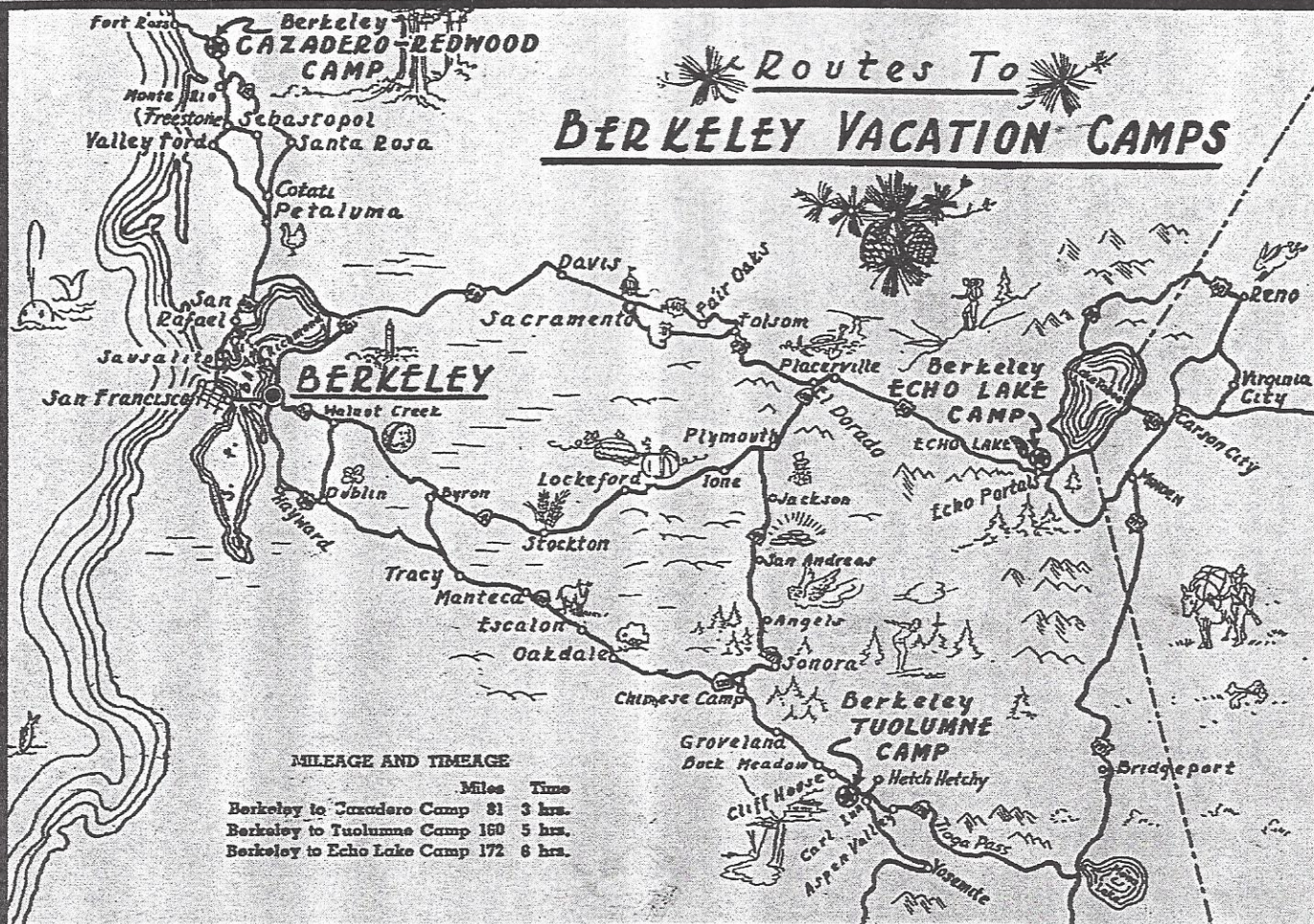
*Campers enjoying the horse trails*



**SUN BATHERS, BERKELEY TUOLUMNE CAMP, GROVELAND, CALIFORNIA**



## Routes To BERKELEY VACATION CAMPS



### MILEAGE AND TIMEAGE

	Miles	Time
Berkeley to Cazadero Camp	81	3 hrs.
Berkeley to Tuolumne Camp	160	5 hrs.
Berkeley to Echo Lake Camp	172	6 hrs.

### CITY OF BERKELEY

JOHN D. PHILLIPS, City Manager

### RECREATION COMMISSION MEMBERS

FREDERICK W. CONFER    MRS. H. E. BENEDICT    JOHN DEBONIS  
President                      Vice President                      Secretary

O. S. BOLTON                      CLEM LAUFENBERG  
WALTER P. CLARK                      FRED C. ROWLEY

CHARLES W. DAVIS, Director of Recreation and Parks

### RESERVATIONS AND RATES

A 25% deposit will hold your reservation — the balance must be paid 10 days before guest goes to camp. Reservations and payments are received at the Berkeley Recreation Office, Berkeley 7-9207, 2180 Milvia Street, Room 140, Berkeley 4. RESERVATIONS ARE NOT TRANSFERABLE. Rates This Year Include Sales Tax.

Board and Lodging	Berkeley Resident	Non-Resident
Adults	\$3.75 per day	\$4.25 per day
Children, 10 - 15 years	3.00	3.50
5 - 9 years	2.50	3.00
1 - 5 years	2.25	2.50

TRANSIENTS: Those staying three days or less at camp pay transient rates: Adults, \$4.50 per day; Children, 1 through 9 years, \$3.25 per day.

AUTO CAMPS: \$1.25 per day for Berkeley residents; \$1.75 per day for non-residents.

When reservations are cancelled, with more than 10 days' notice given, all moneys will be refunded except 50c per person. Shorter notice is subject to small additional charge.

For those attending camp, application for refund should be made with Camp Manager. Claim must be presented to Recreation Department by September 30. No refunds allowed thereafter.

Churches, lodges, and outdoor clubs interested in using the camps either prior to the opening, or after the closing week of the season should get in touch with the Recreation Department.

### GENERAL INFORMATION

**Camp Addresses** — Berkeley Cazadero Redwood Camp, Cazadero, California; Berkeley Tuolumne Camp, Groveland, California; Berkeley Echo Lake Camp, Echo Lake, California. These are also the telephone listings.

**No Pets** — Pets of any kind are prohibited at all camps.

**Camp Facilities** — Washing Machines and Irons (for which a small charge is made), Clothes Lines, Hot and Cold Showers, Gas Plates (for use of mothers with small children); and High Chairs in Dining Rooms. All camps are equipped with Flush Toilets. **Camp Stores** are at all three camps where soft drinks, candy, some toilet articles, stamps, postcards, and limited quantities of athletic equipment may be purchased.

**Transportation to Camp** — Telephone Greyhound bus for service to all three camps. Bus line passes the edge of Tuolumne Camp — but only on Saturdays and Sundays. Daily trip to Echo Lake, but guest must be met at Audrian (Echo Portals) by camp manager. For Cazadero campers, bus only goes to Monte Rio, so guest must be met by camp manager. Arrangements to be met are made when reservations are completed. For BOYS and GIRLS CAMP at CAZADERO, special chartered bus leaves from Recreation Office, 2180 Milvia Street, at beginning of each two week period, 7:30 A.M., fare \$3.50 round trip.

**Equipment Furnished** — Floored Tents (with wood sidewalls), Cots, Mattresses, Wash Bins. Tents are assigned at time of arrival.

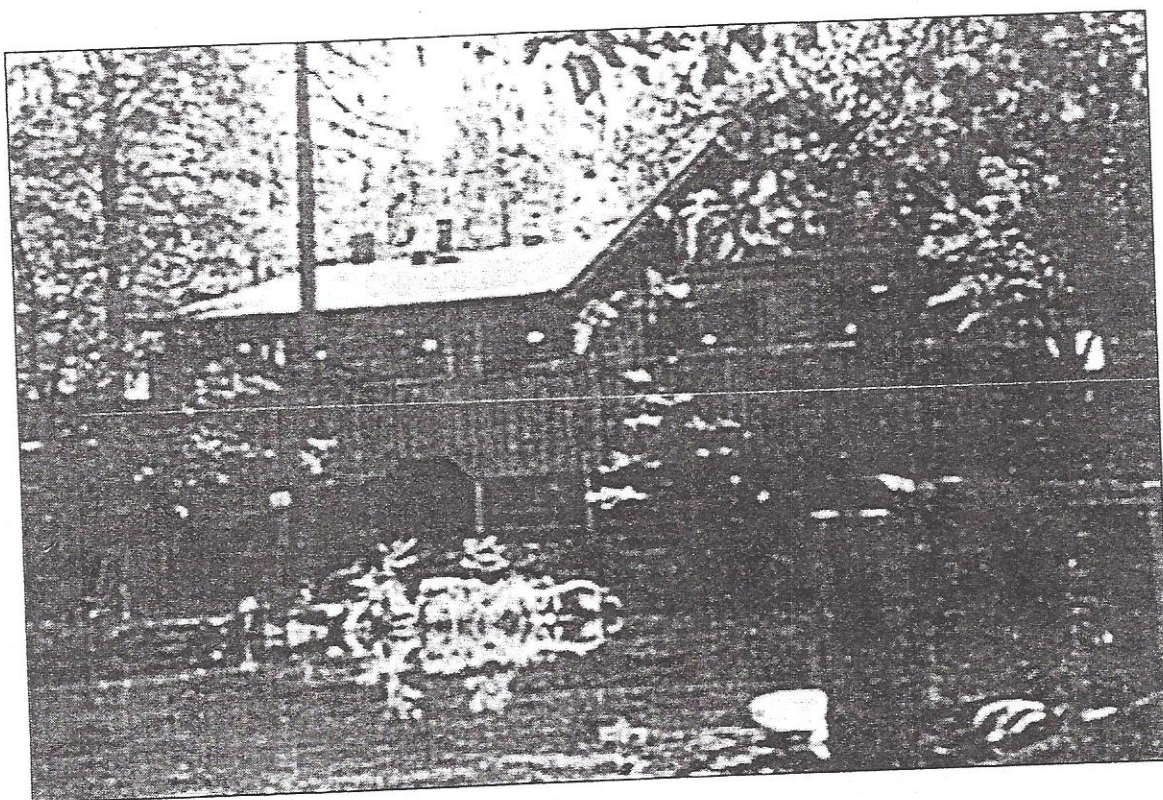
**Meals** — Served Family Style at all camps. Box lunches furnished hikers without extra charge when signed up for in advance.

**THINGS to Bring** — Sleeping Bag and/or Blankets (nights are cold, so bring plenty), Pillow, Towels, Flash Light, Sturdy Shoes, Swimming Suits, Cameras and Films, Fishing Tackle, Bait and License (if 16 years or over), Warm and Sturdy Clothing. Badminton enthusiasts should bring own rackets and birds, or they may be purchased at the Camp Store.



## Camp Song

There's no place like Camp Tuolumne.  
There's no spot where I would rather be.  
The swimming's fine. The meals are great.  
Those who come, their joys relate.  
So come again to fish, to swim, to rest.  
Or to go to points of interest.  
And so, my friends, the fun is here.  
At Tuolumne



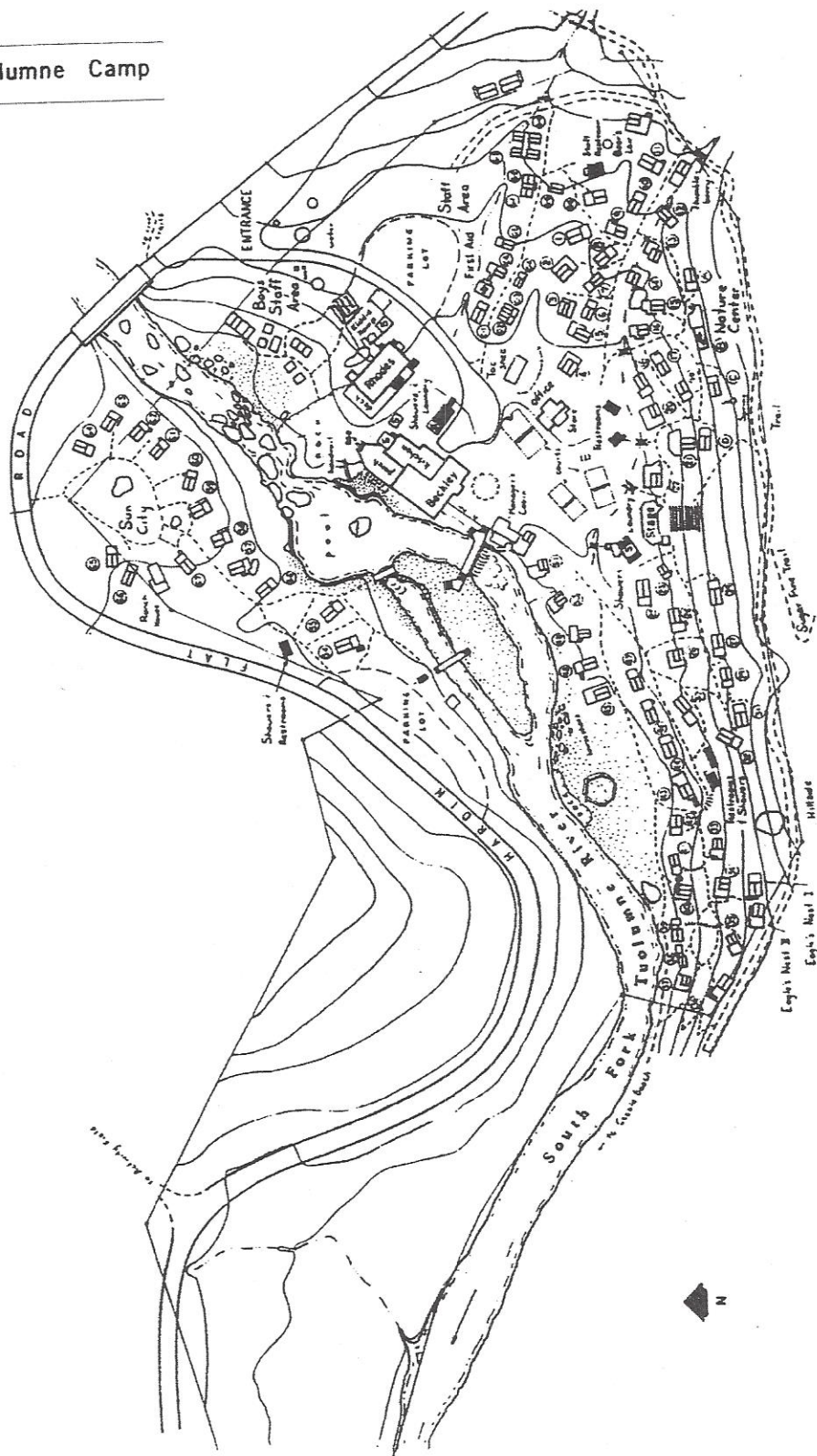
### Lullaby (2<sup>nd</sup> verse)

Lullaby and good night. Hear the tall pine trees sigh.  
Friendly faces softly glow as the campfire burns low.  
We will miss you they say when we've all gone away.  
May god hasten the day when you pass again our way.

Day is done. Gone the sun.  
From the trees, from the hills, from the sky.  
All is well, safely rest. God is nigh.

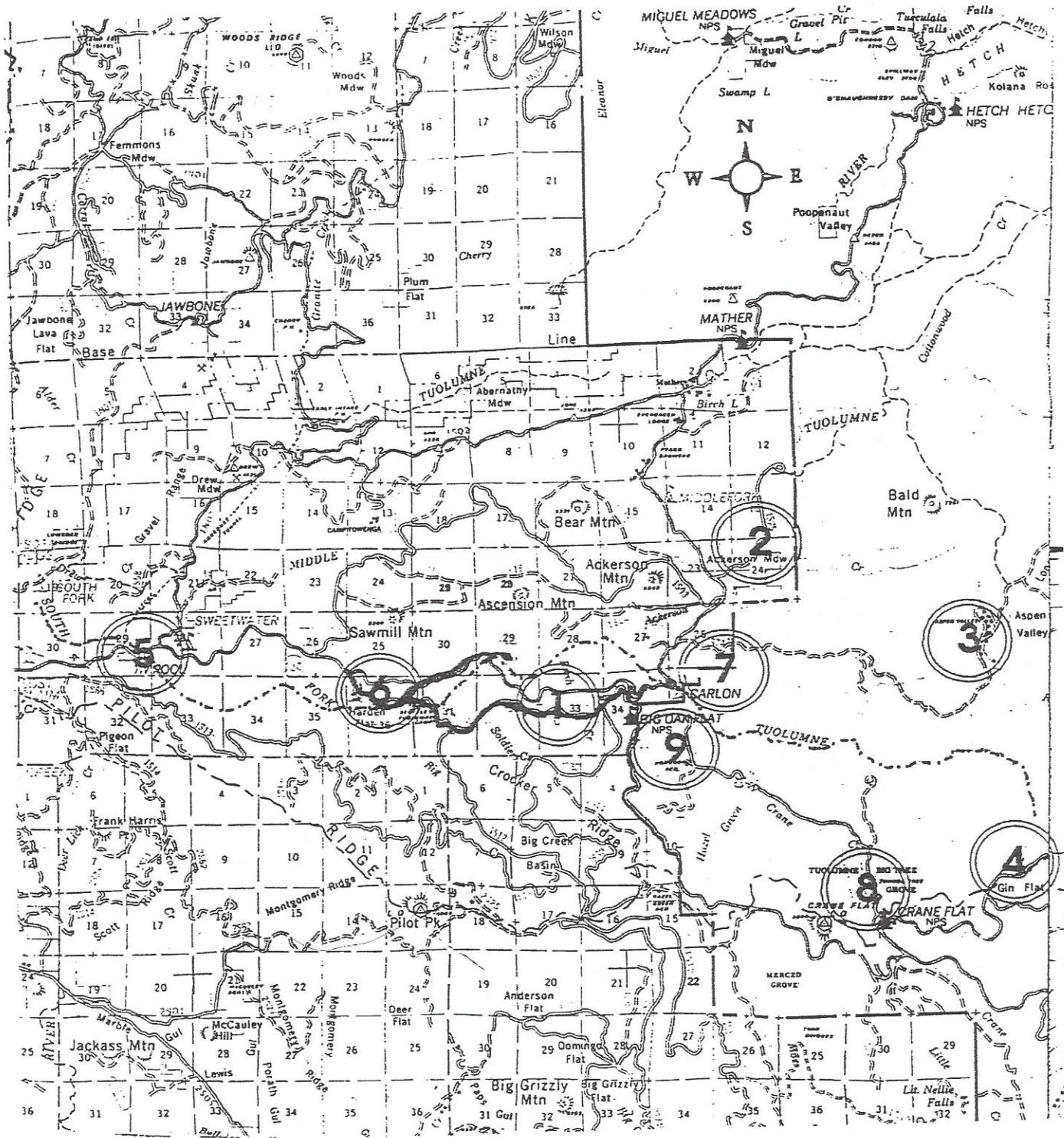


# Berkeley Tuolumne Camp



Layout of Berkely Tuolumne Camp





## LEGEND

- |                   |                   |                  |
|-------------------|-------------------|------------------|
| 1 Crocker Station | 2 Ackerson Meadow | 3 Aspen Valley   |
| 4 Gln Flat        | 5 Cliff House     | 6 Hardin Flat    |
| 7 Carlon          | 8 Crane Flat      | 9 Hogden Meadows |

South Fork of the Tuolumne River

Hardin Flat Road

Rosa Guinn reserves all rights. This information was collected from family member's records and friends.